

Pink-backed Pelican

Pelecanus rufescens

418 plots from 1,044 records

Virgin Yellow-vented Bulbul squares **14**

Single YvB month **30**

Two YvB months **31**

Seasonality
presence bs eggs

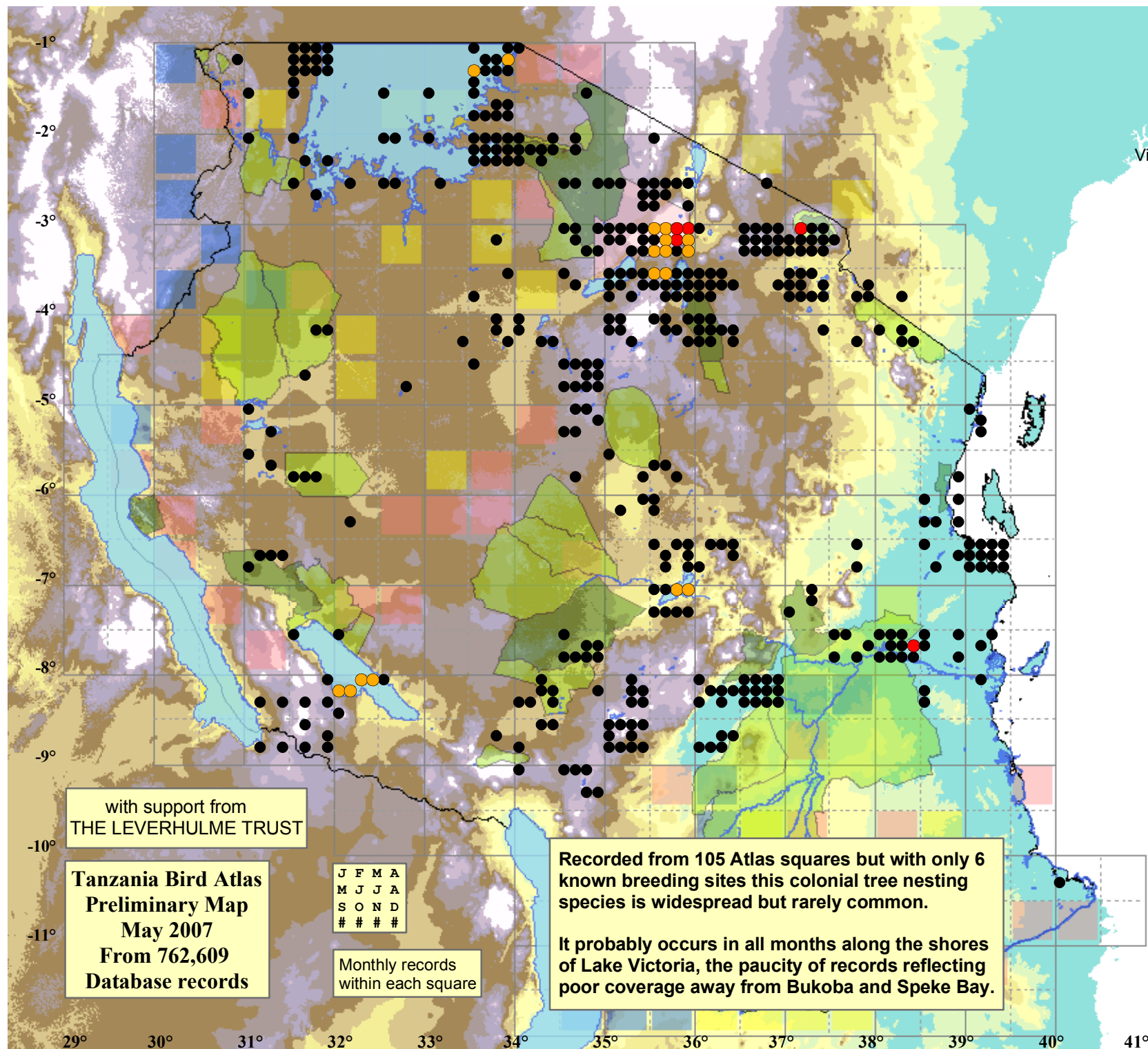
| Month | presence | bs | eggs |
|-----------|----------|----|------|
| January | 230 | 5 | - |
| February | 95 | 11 | 1 |
| March | 68 | 12 | 1 |
| April | 56 | 4 | 1 |
| May | 52 | 1 | - |
| June | 58 | 3 | - |
| July | 73 | - | 1 |
| August | 75 | 2 | 1 |
| September | 58 | 2 | - |
| October | 70 | 1 | - |
| November | 76 | - | - |
| December | 83 | 1 | - |
| month 13 | 3 | | |

Status

- Presence
- Breeding season
- Month with eggs

Elevation (m)

- 1 - 300
- 300 - 500
- 500 - 700
- 700 - 900
- 900 - 1,100
- 1,100 - 1,300
- 1,300 - 1,500
- 1,500 - 1,700
- 1,700 - 1,900
- >1,900



with support from
THE LEVERHULME TRUST

Tanzania Bird Atlas
Preliminary Map
May 2007
From 762,609
Database records

| | | | |
|---|---|---|---|
| J | F | M | A |
| M | J | J | A |
| S | O | N | D |
| # | # | # | # |

Monthly records
within each square

Recorded from 105 Atlas squares but with only 6 known breeding sites this colonial tree nesting species is widespread but rarely common.

It probably occurs in all months along the shores of Lake Victoria, the paucity of records reflecting poor coverage away from Bukoba and Speke Bay.

29° 30° 31° 32° 33° 34° 35° 36° 37° 38° 39° 40° 41°