

The commonest vulture and quite widespread although source populations are clearly confined to large protected areas.

The regular pattern of records in the south-east is an artifact of observer effort.

# White-backed Vulture

## *Gyps africanus*

781 plots from 2,474 records

Virgin Yellow-vented Bulbul squares **35**

Single YvB month **37**

Two YvB months **35**

Seasonality			
	presence	bs	eggs
January	266	6	4
February	208	8	3
March	175	6	5
April	172	8	10
May	114	7	11
June	154	12	8
July	211	18	7
August	228	19	11
September	182	12	5
October	203	13	-
November	164	9	-
December	212	-	1

### STATUS

- Presence
- Breeding season
- Month with eggs

### Protected Areas

- National Park
- Game Reserve
- Conservation Area

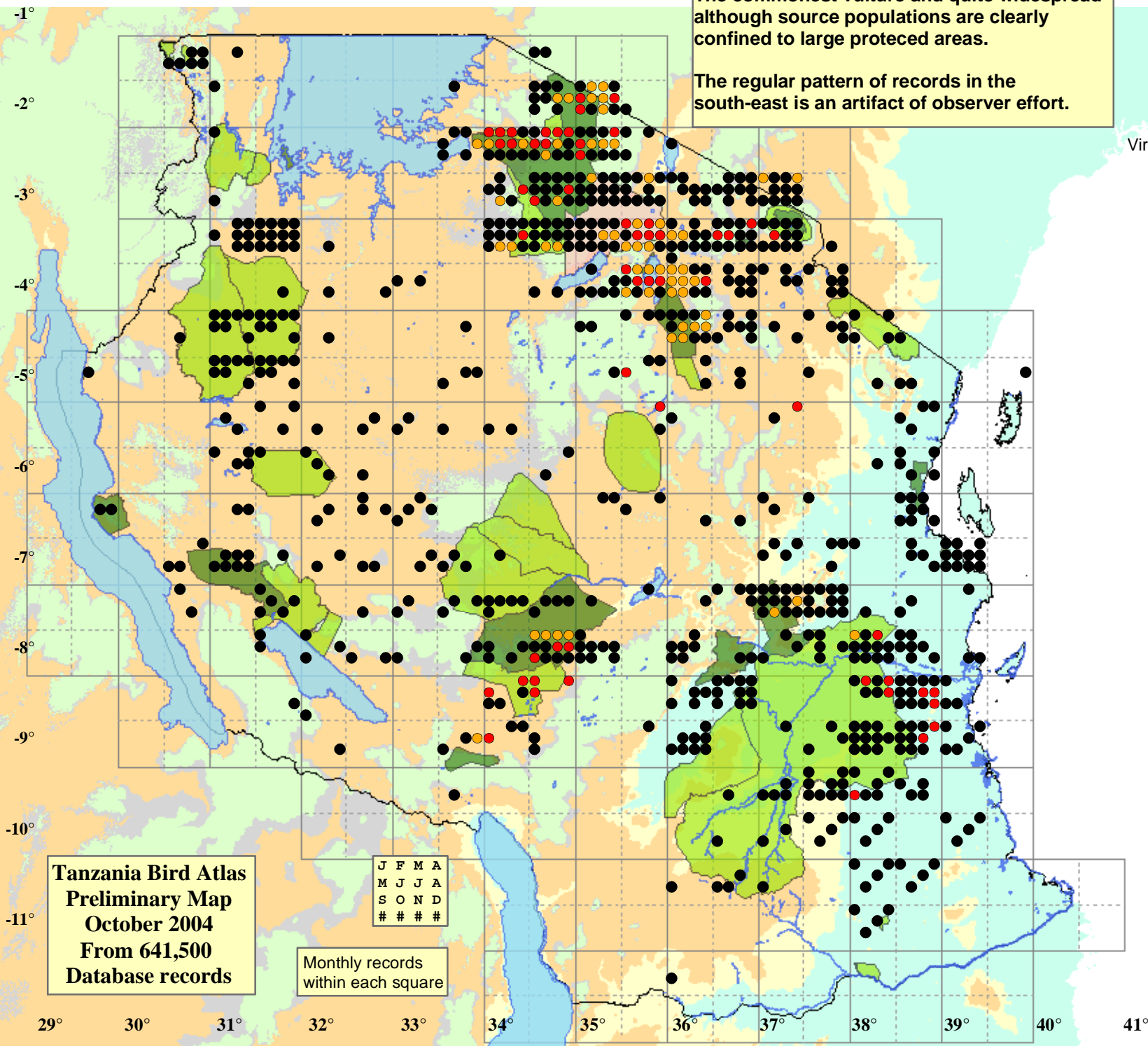
### Elevation (m)

- 1 - 500
- 500 - 700
- 700 - 1,300
- 1,300 - 1,400
- 1,400 - 1,600

Tanzania Bird Atlas  
Preliminary Map  
October 2004  
From 641,500  
Database records

J	F	M	A
M	J	J	A
S	O	N	D
#	#	#	#

Monthly records  
within each square



29° 30° 31° 32° 33° 34° 35° 36° 37° 38° 39° 40° 41°

-1°  
-2°  
-3°  
-4°  
-5°  
-6°  
-7°  
-8°  
-9°  
-10°  
-11°