

# Eurasian Marsh Harrier

*Circus aeruginosus*

285 plots from 664 records

Virgin Yellow-vented Bulbul squares **33**

Single YvB month **32**

Two YvB months **30**

Seasonality  
presence bs eggs

Month	presence	bs	eggs
January	188	-	-
February	129	-	-
March	83	-	-
April	29	-	-
May	6	-	-
June	1	-	-
July	3	-	-
August	4	-	-
September	7	-	-
October	37	-	-
November	53	-	-
December	122	-	-

## Status

- Presence
- Breeding season
- Month with eggs

## Elevation (m)

- 1 - 300
- 300 - 500
- 500 - 700
- 700 - 900
- 900 - 1,100
- 1,100 - 1,300
- 1,300 - 1,500
- 1,500 - 1,700
- 1,700 - 1,900
- >1,900

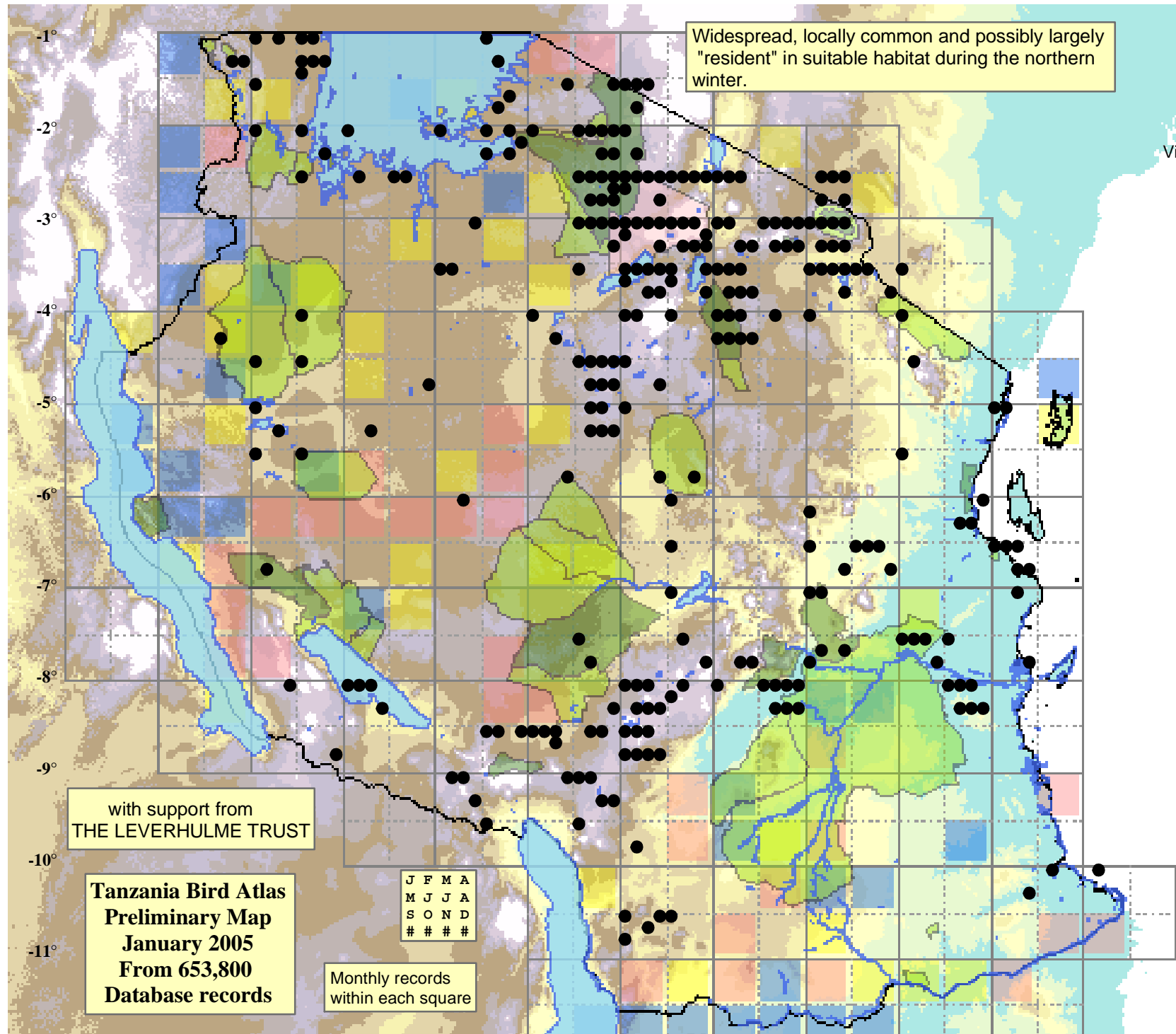
Widespread, locally common and possibly largely "resident" in suitable habitat during the northern winter.

with support from  
THE LEVERHULME TRUST

Tanzania Bird Atlas  
Preliminary Map  
January 2005  
From 653,800  
Database records

J	F	M	A
M	J	J	A
S	O	N	D
#	#	#	#

Monthly records  
within each square



29° 30° 31° 32° 33° 34° 35° 36° 37° 38° 39° 40° 41°