

# African Marsh Harrier

*Circus ranivorus*

487 plots from 1,101 records

Virgin Yellow-vented Bulbul squares **33**

Single YvB month **32**

Two YvB months **30**

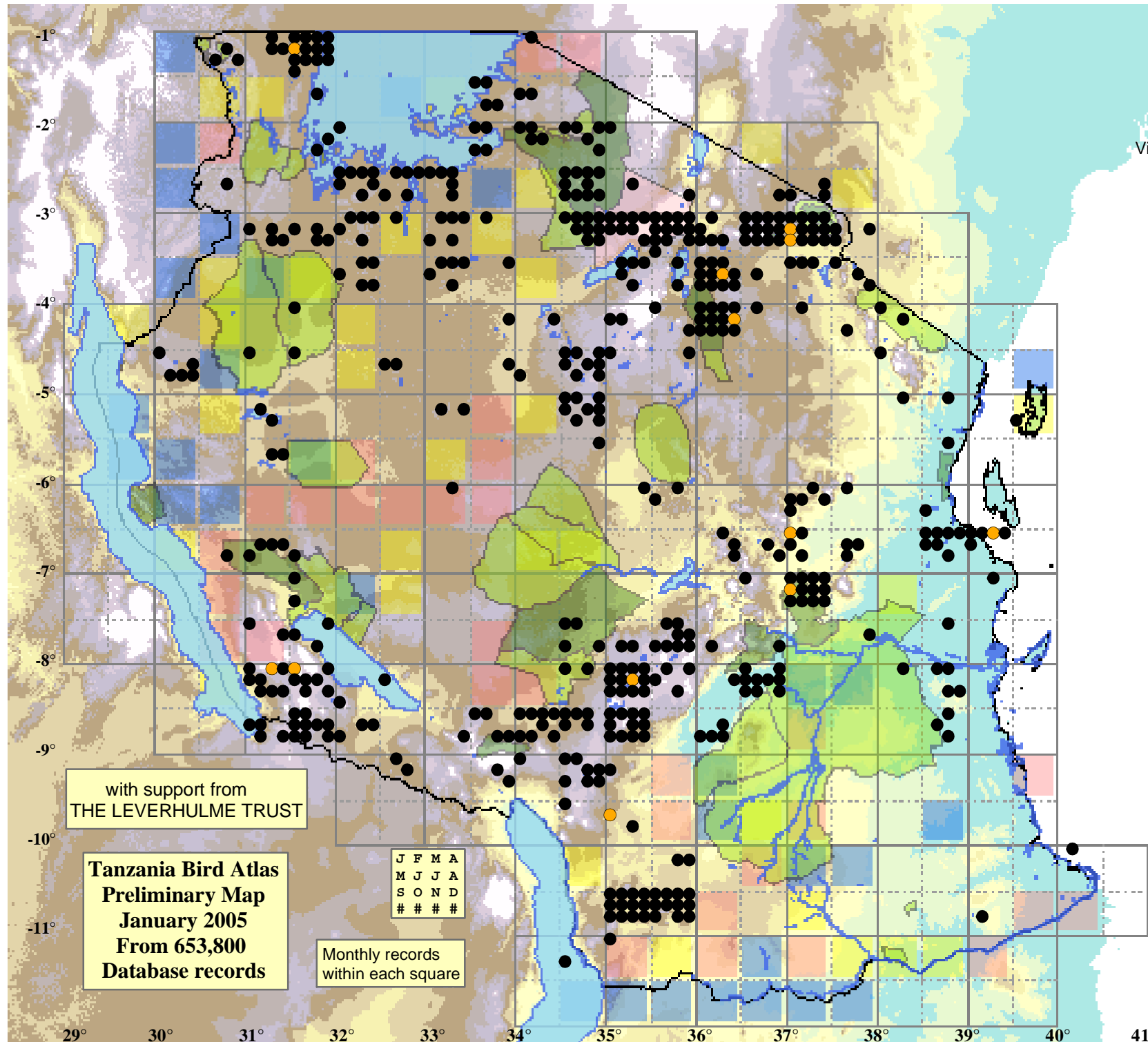
	Seasonality		
	presence	bs	eggs
January	124	2	-
February	109	-	-
March	98	-	-
April	66	-	-
May	69	5	-
June	64	-	-
July	105	3	-
August	99	1	-
September	84	2	-
October	69	-	-
November	89	-	-
December	106	-	-

## Status

- Presence
- Breeding season
- Month with eggs

## Elevation (m)

- 1 - 300
- 300 - 500
- 500 - 700
- 700 - 900
- 900 - 1,100
- 1,100 - 1,300
- 1,300 - 1,500
- 1,500 - 1,700
- 1,700 - 1,900
- >1,900



with support from  
THE LEVERHULME TRUST

**Tanzania Bird Atlas**  
**Preliminary Map**  
**January 2005**  
**From 653,800**  
**Database records**

J	F	M	A
M	J	J	A
S	O	N	D
#	#	#	#

Monthly records  
within each square

29° 30° 31° 32° 33° 34° 35° 36° 37° 38° 39° 40° 41°

-1°  
-2°  
-3°  
-4°  
-5°  
-6°  
-7°  
-8°  
-9°  
-10°  
-11°