

# Pringle's Puffback

*Dryoscopus pringlii*

38 plots plots from 49 records

Virgin Yellow-vented Bulbul squares **12**

Single YvB month **21**

Two YvB months **24**

Seasonality  
presence bs eggs

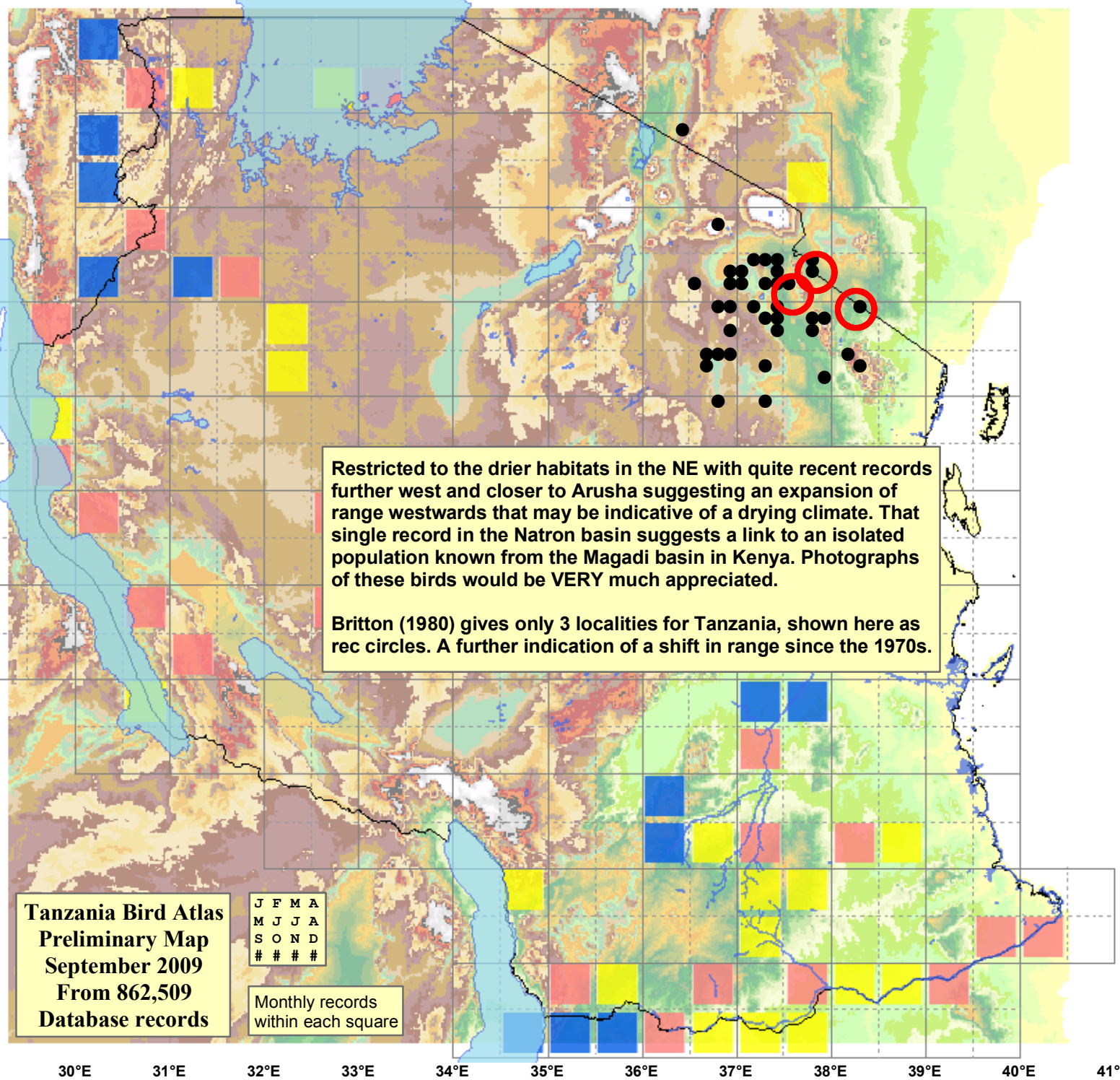
Month	presence	bs	eggs
January	-	-	-
February	4	-	-
March	14	-	-
April	5	-	-
May	1	-	-
June	1	-	-
July	6	-	-
August	5	-	-
September	3	-	-
October	-	-	-
November	4	-	-
December	6	-	-
month 13	4	-	-

## Status

- Presence
- Breeding season
- Month with eggs

## 30m SRTM

- 0 - 100
- 100 - 200
- 200 - 300
- 300 - 400
- 400 - 450
- 450 - 500
- 500 - 550
- 550 - 600
- 600 - 650
- 650 - 700
- 700 - 750
- 750 - 800
- 800 - 850
- 850 - 900
- 900 - 950
- 950 - 1,000
- 1,000 - 1,050
- 1,050 - 1,100
- 1,100 - 1,200
- 1,200 - 1,300
- 1,300 - 1,400
- 1,400 - 1,500
- 1,500 - 1,600
- 1,600 - 1,700
- 1,700 - 1,800
- 1,800 - 1,900
- 1,900 - 2,000
- 2,000 - 2,100
- 2,100 - 2,200
- 2,200 - 2,300
- 2,300 - 2,400
- 2,400 - 2,500



Restricted to the drier habitats in the NE with quite recent records further west and closer to Arusha suggesting an expansion of range westwards that may be indicative of a drying climate. That single record in the Natron basin suggests a link to an isolated population known from the Magadi basin in Kenya. Photographs of these birds would be VERY much appreciated.

Britton (1980) gives only 3 localities for Tanzania, shown here as rec circles. A further indication of a shift in range since the 1970s.

**Tanzania Bird Atlas**  
**Preliminary Map**  
**September 2009**  
**From 862,509**  
**Database records**

J	F	M	A
M	J	J	A
S	O	N	D
#	#	#	#

Monthly records  
within each square

30°E 31°E 32°E 33°E 34°E 35°E 36°E 37°E 38°E 39°E 40°E 41°E

1°S  
2°S  
3°S  
4°S  
5°S  
6°S  
7°S  
8°S  
9°S  
10°S  
11°S  
12°S