

Slate-coloured Boubou

Laniarius funebris

1,094 plots from 3,772 records

Virgin Yellow-vented Bulbul squares **12**

Single YvB month **21**

Two YvB months **24**

Seasonality presence bs eggs

Month	presence	bs	eggs
January	33	5	-
February	42	8	1
March	25	1	-
April	30	-	-
May	28	1	-
June	35	-	-
July	45	-	-
August	25	1	-
September	34	2	-
October	46	2	-
November	43	6	-
December	38	9	-
month 13	4		

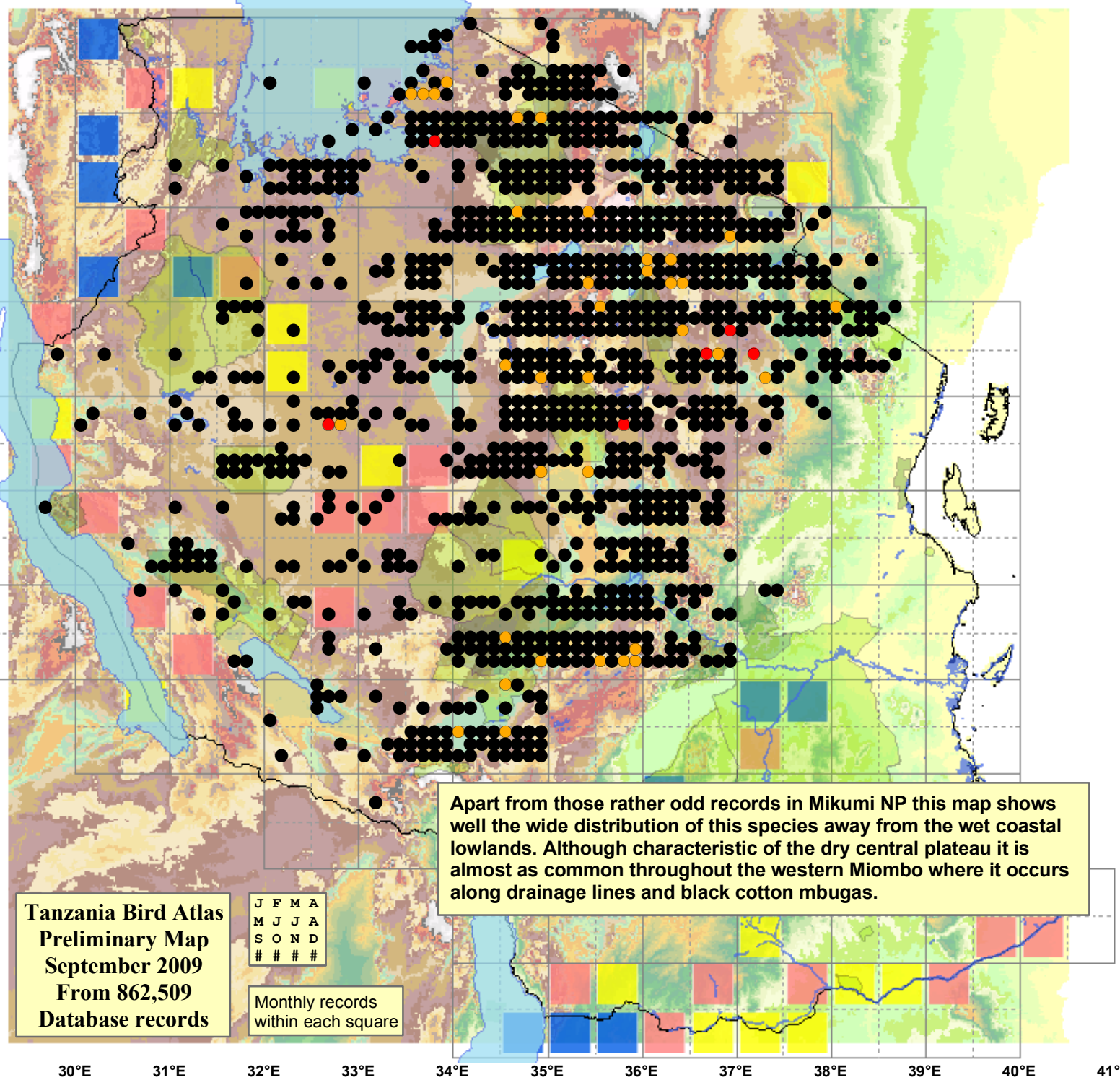
Status

- Presence
- Breeding season
- Month with eggs

30m SRTM

- 0 - 100
- 100 - 200
- 200 - 300
- 300 - 400
- 400 - 450
- 450 - 500
- 500 - 550
- 550 - 600
- 600 - 650
- 650 - 700
- 700 - 750
- 750 - 800
- 800 - 850

- 850 - 900
- 900 - 950
- 950 - 1,000
- 1,000 - 1,050
- 1,050 - 1,100
- 1,100 - 1,200
- 1,200 - 1,300
- 1,300 - 1,400
- 1,400 - 1,500
- 1,500 - 1,600
- 1,600 - 1,700
- 1,700 - 1,800
- 1,800 - 1,900
- 1,900 - 2,000
- 2,000 - 2,100
- 2,100 - 2,200
- 2,200 - 2,300
- 2,300 - 2,400
- 2,400 - 2,500



Tanzania Bird Atlas
Preliminary Map
September 2009
From 862,509
Database records

J F M A
M J J A
S O N D
#

Monthly records
within each square

Apart from those rather odd records in Mikumi NP this map shows well the wide distribution of this species away from the wet coastal lowlands. Although characteristic of the dry central plateau it is almost as common throughout the western Miombo where it occurs along drainage lines and black cotton mbugas.