

Widespread but never what one would call common this species most probably occurs in every square but when it's not calling it can be difficult to locate. The lack of breeding season records also attests to its secretive nature, finding nests is a real challenge.

Grey-headed Bush Shrike

Malaconotus blanchoti

674 plots plots from 1,135 records

- Virgin Yellow-vented Bulbul squares **12**
- Single YvB month **21**
- Two YvB months **24**

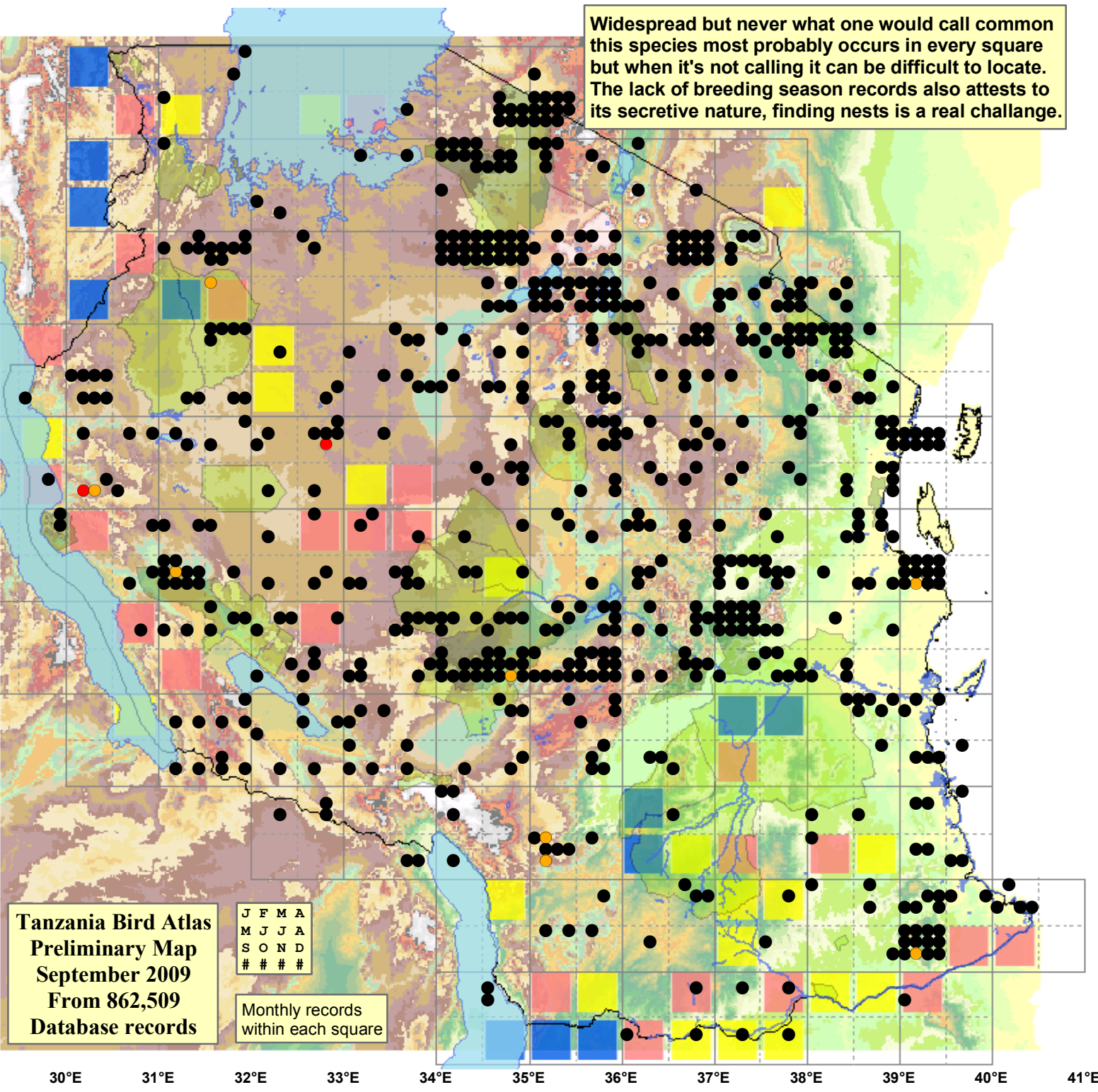
Seasonality			
	presence	bs	eggs
January	83	1	-
February	78	1	-
March	82	-	-
April	71	-	-
May	65	-	-
June	96	1	-
July	121	-	-
August	137	-	-
September	89	-	-
October	119	3	1
November	99	3	1
December	82	-	-
month 13	2		

Status

- Presence
- Breeding season
- Month with eggs

30m SRTM

- 0 - 100
- 100 - 200
- 200 - 300
- 300 - 400
- 400 - 450
- 450 - 500
- 500 - 550
- 550 - 600
- 600 - 650
- 650 - 700
- 700 - 750
- 750 - 800
- 800 - 850
- 850 - 900
- 900 - 950
- 950 - 1,000
- 1,000 - 1,050
- 1,050 - 1,100
- 1,100 - 1,200
- 1,200 - 1,300
- 1,300 - 1,400
- 1,400 - 1,500
- 1,500 - 1,600
- 1,600 - 1,700
- 1,700 - 1,800
- 1,800 - 1,900
- 1,900 - 2,000
- 2,000 - 2,100
- 2,100 - 2,200
- 2,200 - 2,300
- 2,300 - 2,400
- 2,400 - 2,500



Tanzania Bird Atlas
 Preliminary Map
 September 2009
 From 862,509
 Database records

J	F	M	A
M	J	J	A
S	O	N	D
#	#	#	#

Monthly records
 within each square