

Widespread but generally uncommon preferring wetter woodlands to drier ones. Its habit of sitting quietly under a shady canopy renders it difficult to locate during casual visits to any site.

Shikra

Accipiter badius

284 plots from 354 records

Virgin Yellow-vented Bulbul squares **33**

Single YvB month **34**

Two YvB months **30**

Seasonality
presence bs eggs

Month	presence	bs	eggs
January	28	-	-
February	28	-	-
March	33	-	1
April	27	-	1
May	30	1	-
June	27	2	-
July	40	2	-
August	29	-	-
September	38	2	-
October	29	-	-
November	22	-	-
December	12	-	-

Status

- Presence
- Breeding season
- Month with eggs

Elevation (m)

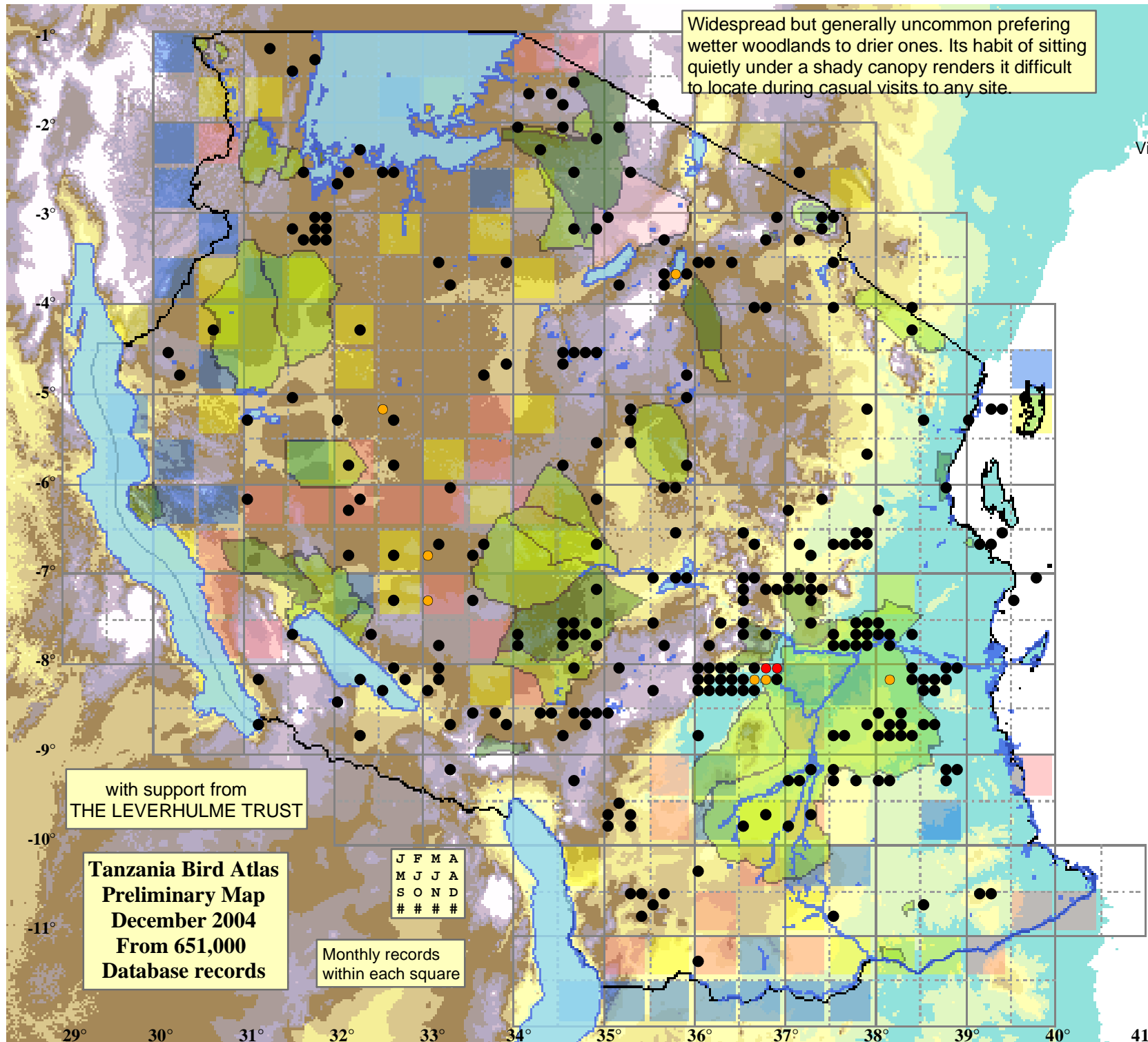
- 1 - 300
- 300 - 500
- 500 - 700
- 700 - 900
- 900 - 1,100
- 1,100 - 1,300
- 1,300 - 1,500
- 1,500 - 1,700
- 1,700 - 1,900
- >1,900

with support from
THE LEVERHULME TRUST

Tanzania Bird Atlas
Preliminary Map
December 2004
From 651,000
Database records

J	F	M	A
M	J	J	A
S	O	N	D
#	#	#	#

Monthly records
within each square



29° 30° 31° 32° 33° 34° 35° 36° 37° 38° 39° 40° 41°