

Levant Sparrowhawk

Accipiter brevipes

2 plots from 2 records

Virgin Yellow-vented Bulbul squares **33**

Single YvB month **34**

Two YvB months **30**

Seasonality
presence bs eggs

| Month | presence | bs | eggs |
|-----------|----------|----|------|
| January | - | - | - |
| February | - | - | - |
| March | - | - | - |
| April | - | - | - |
| May | - | - | - |
| June | - | - | - |
| July | - | - | - |
| August | - | - | - |
| September | - | - | - |
| October | - | - | - |
| November | - | - | - |
| December | 2 | - | - |

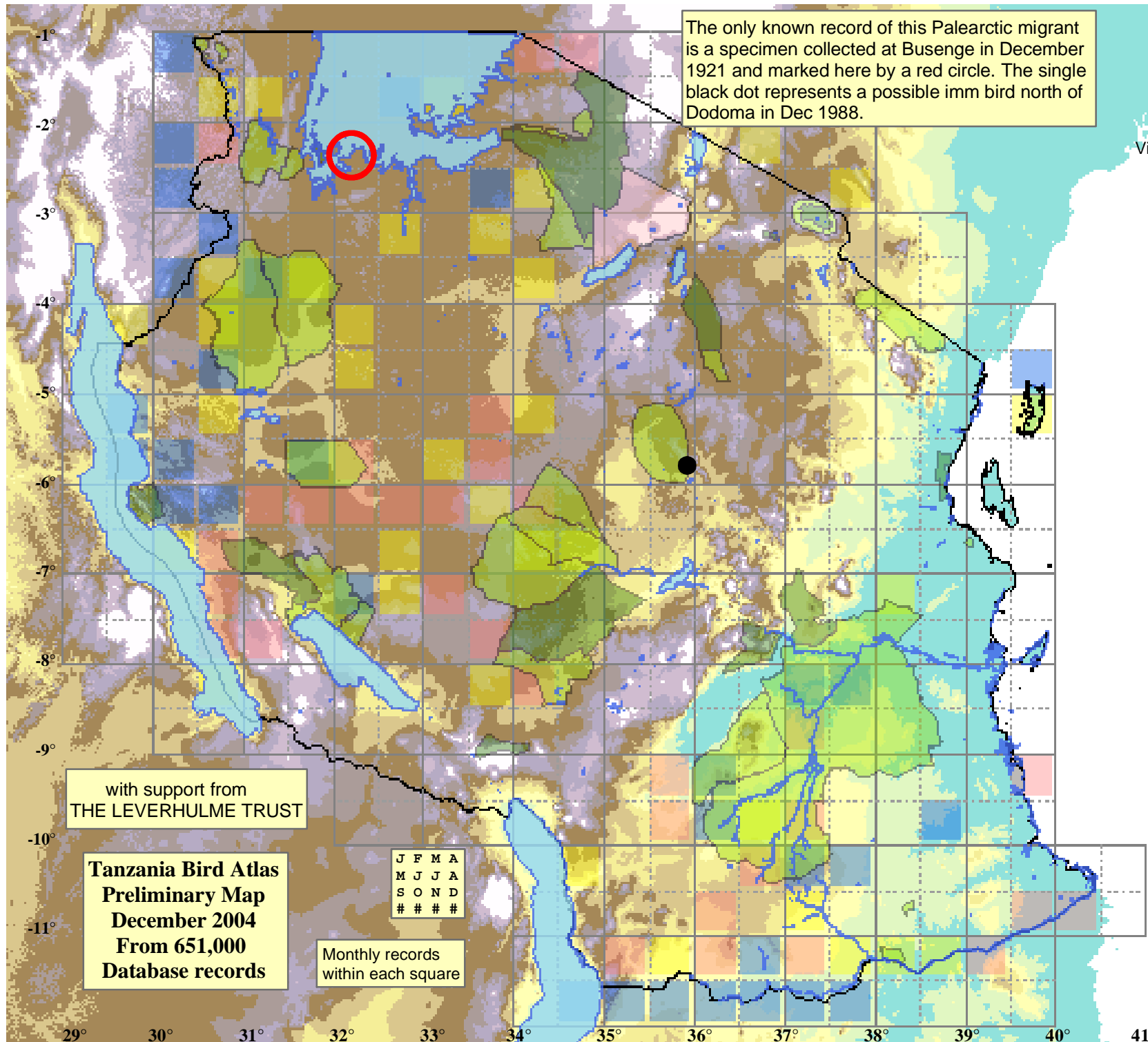
Status

- Presence
- Breeding season
- Month with eggs

Elevation (m)

- 1 - 300
- 300 - 500
- 500 - 700
- 700 - 900
- 900 - 1,100
- 1,100 - 1,300
- 1,300 - 1,500
- 1,500 - 1,700
- 1,700 - 1,900
- >1,900

The only known record of this Palearctic migrant is a specimen collected at Busenge in December 1921 and marked here by a red circle. The single black dot represents a possible imm bird north of Dodoma in Dec 1988.



with support from
THE LEVERHULME TRUST

Tanzania Bird Atlas
Preliminary Map
December 2004
From 651,000
Database records

| | | | |
|---|---|---|---|
| J | F | M | A |
| M | J | J | A |
| S | O | N | D |
| # | # | # | # |

Monthly records
within each square

29° 30° 31° 32° 33° 34° 35° 36° 37° 38° 39° 40° 41°

-1°
-2°
-3°
-4°
-5°
-6°
-7°
-8°
-9°
-10°
-11°