

Black Sparrowhawk

Accipiter melanoleucus

180 plots from 276 records

A widespread low density bird of forest edge and well wooded country. It often flies below canopy height and is easily missed unless observers are resident in occupied habitat. A great chicken thief it is still shot on sight by even enlightened farmers.

Virgin Yellow-vented Bulbul squares **33**
 Single YvB month **34**
 Two YvB months **30**

Seasonality

	presence	bs	eggs
January	15	-	-
February	28	1	-
March	17	1	-
April	18	1	-
May	9	-	-
June	22	-	-
July	21	-	-
August	23	2	-
September	28	4	-
October	31	5	1
November	24	2	-
December	23	-	-

- Status**
- Presence
 - Breeding season
 - Month with eggs

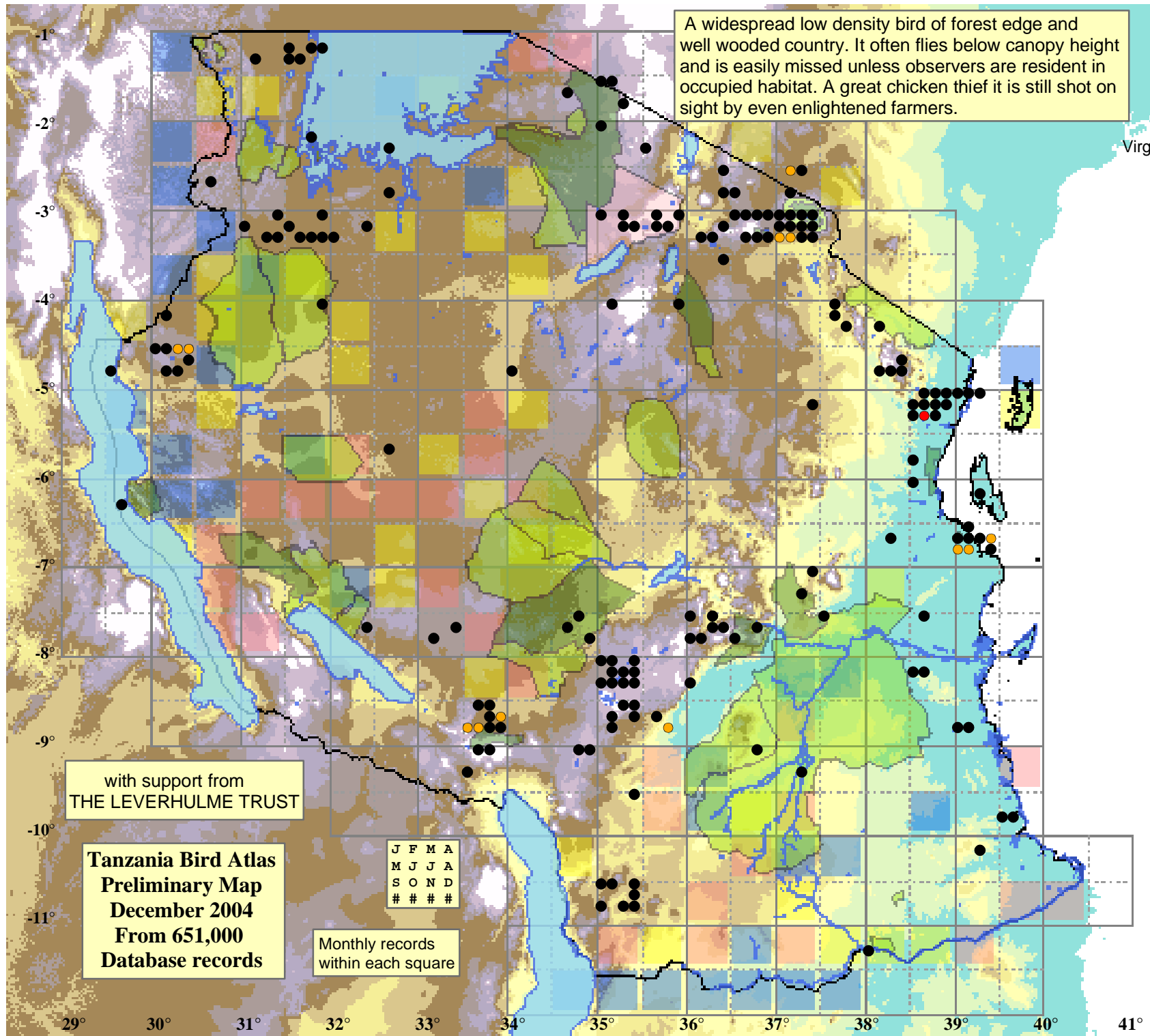
- Elevation (m)**
- 1 - 300
 - 300 - 500
 - 500 - 700
 - 700 - 900
 - 900 - 1,100
 - 1,100 - 1,300
 - 1,300 - 1,500
 - 1,500 - 1,700
 - 1,700 - 1,900
 - >1,900

with support from
THE LEVERHULME TRUST

Tanzania Bird Atlas
Preliminary Map
 December 2004
 From 651,000
 Database records

J	F	M	A
M	J	J	A
S	O	N	D
#	#	#	#

Monthly records
within each square



29° 30° 31° 32° 33° 34° 35° 36° 37° 38° 39° 40° 41°

-1°
-2°
-3°
-4°
-5°
-6°
-7°
-8°
-9°
-10°
-11°