

Ovambo Sparrowhawk

Accipiter ovampensis

86 plots from 127 records

Virgin Yellow-vented Bulbul squares **33**

Single YvB month **34**

Two YvB months **30**

Seasonality
presence bs eggs

Month	presence	bs	eggs
January	4	-	-
February	16	-	-
March	15	-	-
April	11	-	-
May	14	1	-
June	8	-	-
July	9	-	-
August	13	-	-
September	5	1	-
October	9	-	-
November	11	-	-
December	8	1	-

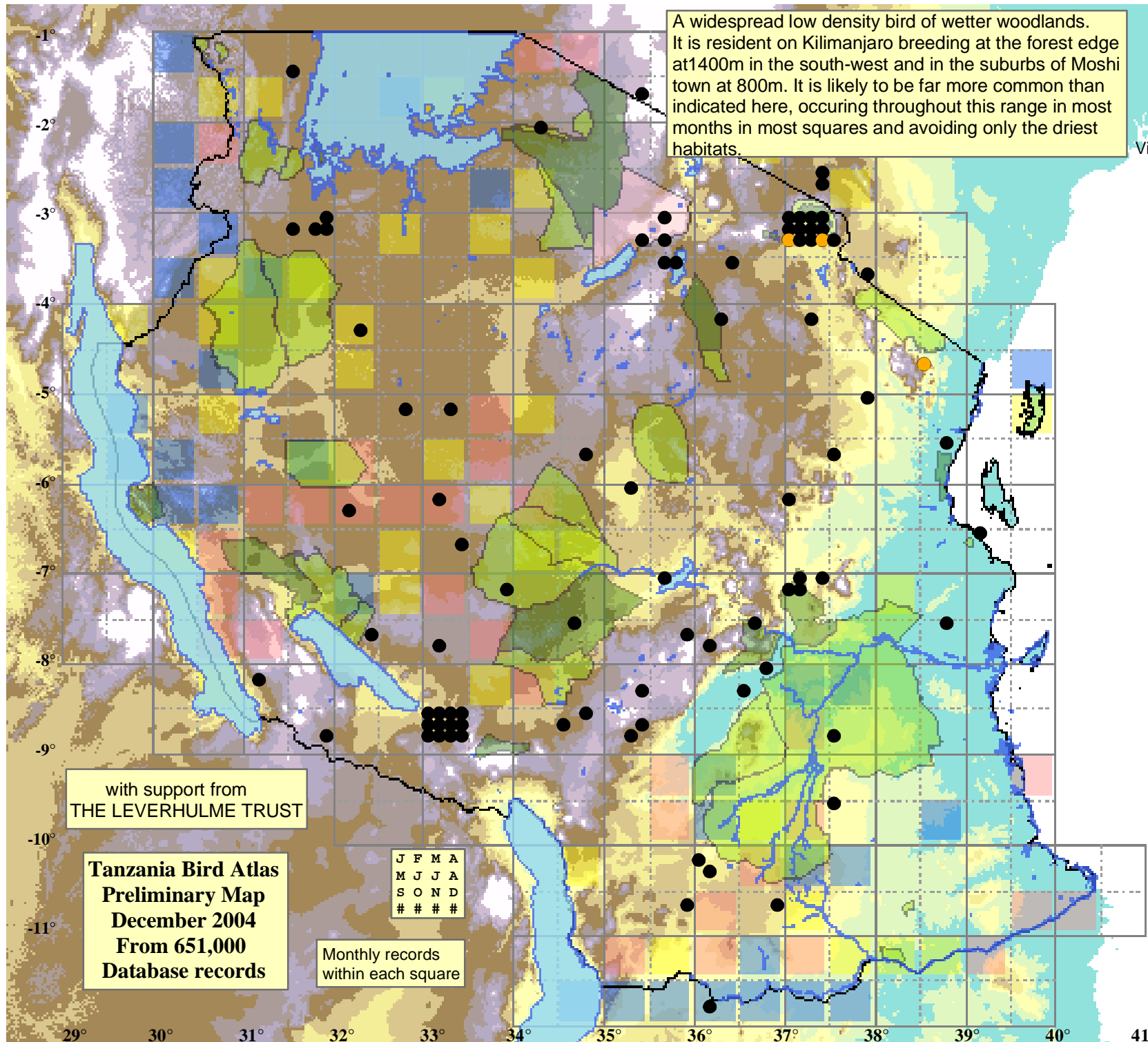
Status

- Presence
- Breeding season
- Month with eggs

Elevation (m)

- 1 - 300
- 300 - 500
- 500 - 700
- 700 - 900
- 900 - 1,100
- 1,100 - 1,300
- 1,300 - 1,500
- 1,500 - 1,700
- 1,700 - 1,900
- >1,900

A widespread low density bird of wetter woodlands. It is resident on Kilimanjaro breeding at the forest edge at 1400m in the south-west and in the suburbs of Moshi town at 800m. It is likely to be far more common than indicated here, occurring throughout this range in most months in most squares and avoiding only the driest habitats.



with support from
THE LEVERHULME TRUST

Tanzania Bird Atlas
Preliminary Map
December 2004
From 651,000
Database records

J	F	M	A
M	J	J	A
S	O	N	D
#	#	#	#

Monthly records
within each square

29° 30° 31° 32° 33° 34° 35° 36° 37° 38° 39° 40° 41°

-1°
-2°
-3°
-4°
-5°
-6°
-7°
-8°
-9°
-10°
-11°