

# African Goshawk

*Accipiter tachiro*

456 plots from 1,038 records

Widespread and locally common in forest, forest edge and rich woodland habitats. It's distinctive display makes this the easiest accipiter to identify.

Virgin Yellow-vented Bulbul squares **33**

Single YvB month **34**

Two YvB months **30**

Seasonality  
presence bs eggs

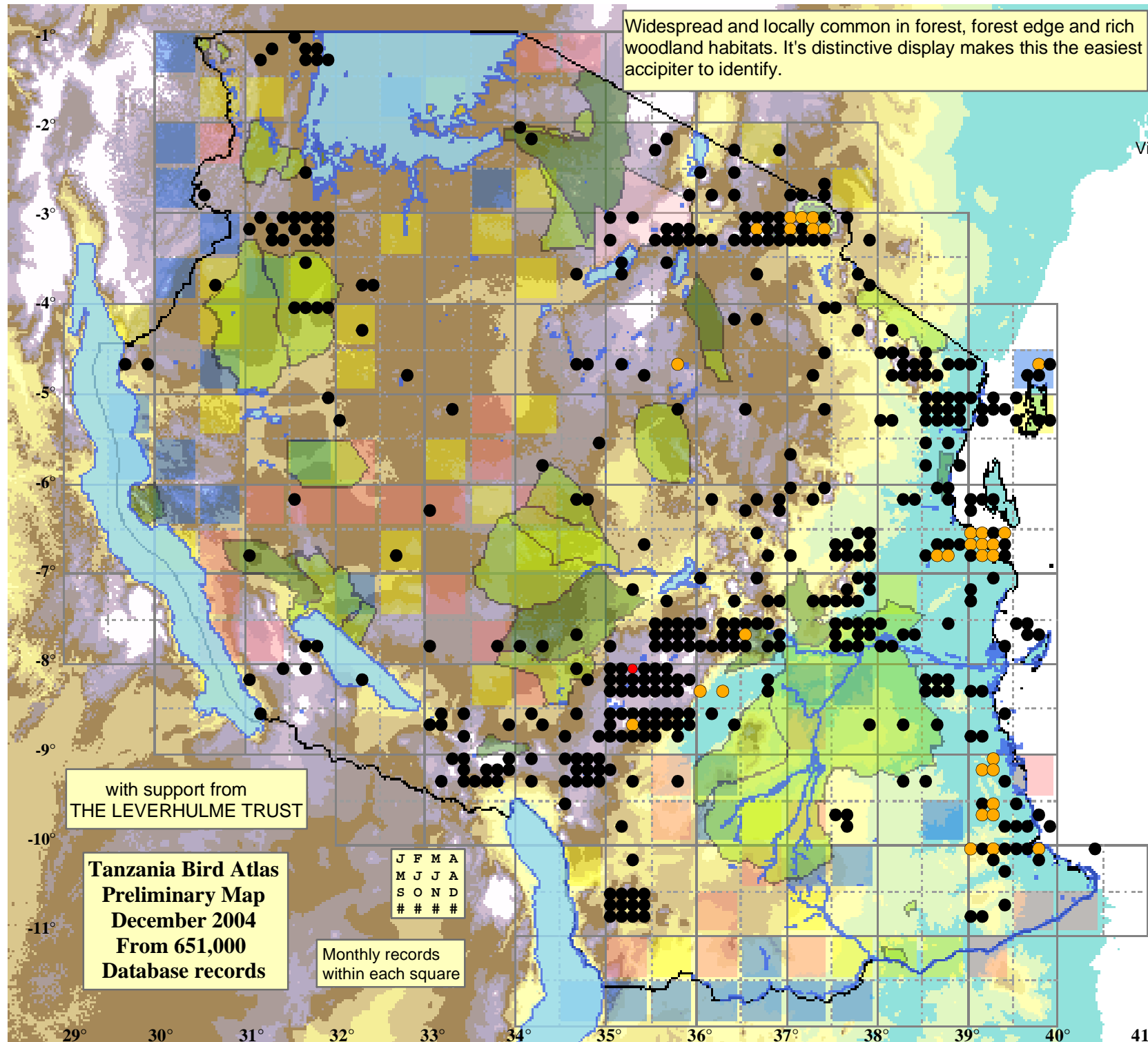
Month	presence	bs	eggs
January	76	3	-
February	83	2	-
March	60	11	1
April	67	1	-
May	67	3	-
June	63	6	-
July	102	9	-
August	77	1	-
September	106	1	-
October	103	3	-
November	105	3	-
December	84	-	-

## Status

- Presence
- Breeding season
- Month with eggs

## Elevation (m)

- 1 - 300
- 300 - 500
- 500 - 700
- 700 - 900
- 900 - 1,100
- 1,100 - 1,300
- 1,300 - 1,500
- 1,500 - 1,700
- 1,700 - 1,900
- >1,900



with support from  
THE LEVERHULME TRUST

Tanzania Bird Atlas  
Preliminary Map  
December 2004  
From 651,000  
Database records

J	F	M	A
M	J	J	A
S	O	N	D
#	#	#	#

Monthly records  
within each square

29° 30° 31° 32° 33° 34° 35° 36° 37° 38° 39° 40° 41°

-1°  
-2°  
-3°  
-4°  
-5°  
-6°  
-7°  
-8°  
-9°  
-10°  
-11°