

Imperial Eagle

Aquila heliaca

7 plots from 8 records

Virgin Yellow-vented Bulbul squares **33**

Single YvB month **34**

Two YvB months **30**

Seasonality
presence bs eggs

Month	presence	bs	eggs
January	1	-	-
February	2	-	-
March	-	-	-
April	1	-	-
May	-	-	-
June	-	-	-
July	-	-	-
August	-	-	-
September	-	-	-
October	-	-	-
November	1	-	-
December	3	-	-

Status

- Presence
- Breeding season
- Month with eggs

Elevation (m)

- 1 - 300
- 300 - 500
- 500 - 700
- 700 - 900
- 900 - 1,100
- 1,100 - 1,300
- 1,300 - 1,500
- 1,500 - 1,700
- 1,700 - 1,900
- >1,900

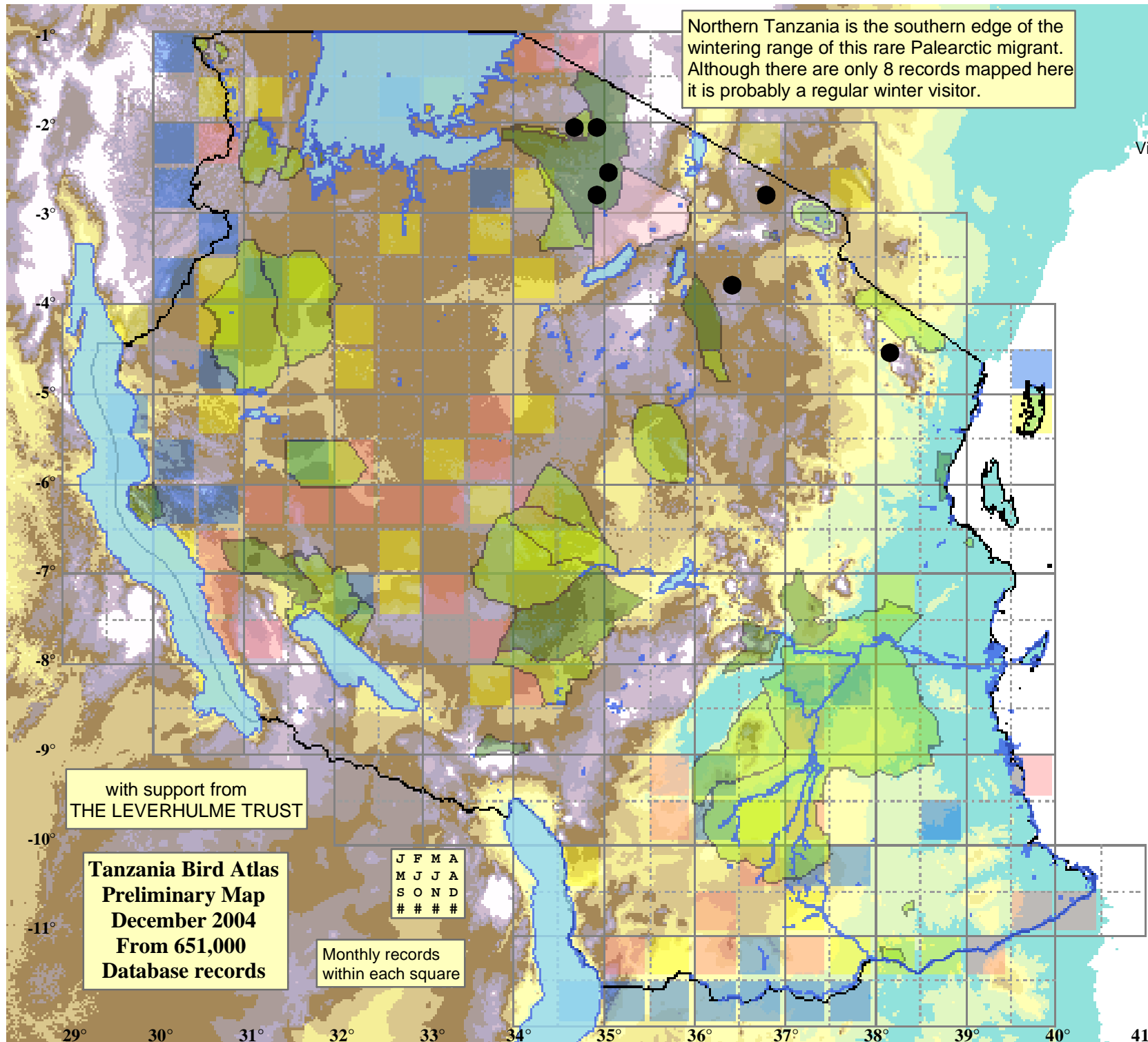
Northern Tanzania is the southern edge of the wintering range of this rare Palearctic migrant. Although there are only 8 records mapped here it is probably a regular winter visitor.

with support from
THE LEVERHULME TRUST

Tanzania Bird Atlas
Preliminary Map
December 2004
From 651,000
Database records

J	F	M	A
M	J	J	A
S	O	N	D
#	#	#	#

Monthly records
within each square



29° 30° 31° 32° 33° 34° 35° 36° 37° 38° 39° 40° 41°