

# Verreaux's Eagle

*Aquila verreauxii*

223 plots from 392 records

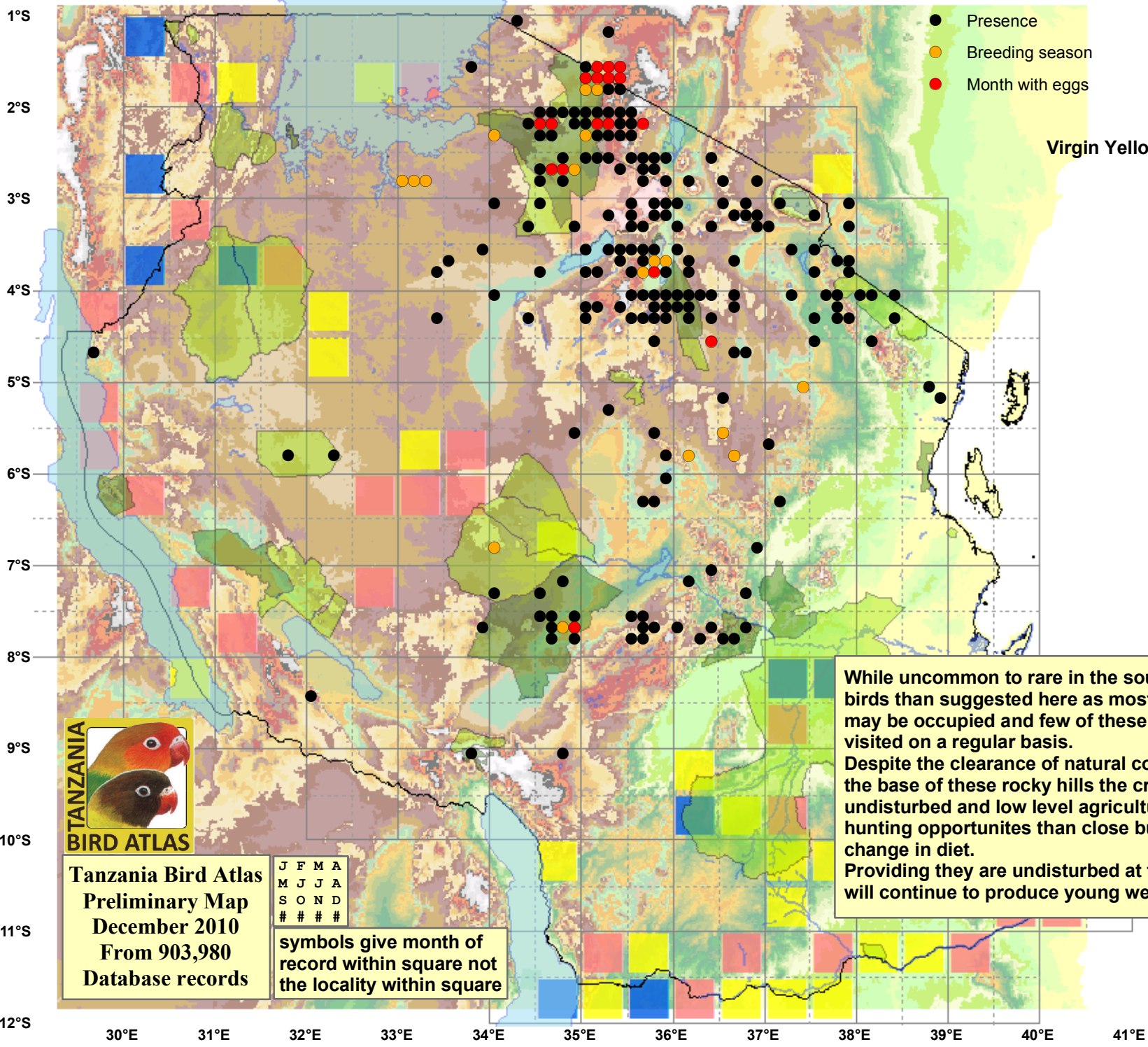
Virgin Yellow-vented Bulbul squares **9**

Single YvB month **22**

Two YvB months **25**

	Seasonality		
	presence	bs	eggs
January	44	1	-
February	32	-	1
March	34	2	1
April	29	1	3
May	19	-	2
June	28	2	5
July	21	4	3
August	23	3	2
September	31	5	-
October	31	7	-
November	24	1	1
December	31	-	-
month 13	1		

While uncommon to rare in the south there are probably more birds than suggested here as most isolated largish rocky hills may be occupied and few of these are ever birded let alone visited on a regular basis. Despite the clearance of natural cover for agriculture around the base of these rocky hills the crags themselves often appear undisturbed and low level agriculture probably provides more hunting opportunities than close bush if they ever want a change in diet. Providing they are undisturbed at the nest many of these pairs will continue to produce young well into the near future.



**Tanzania Bird Atlas**  
**Preliminary Map**  
**December 2010**  
**From 903,980**  
**Database records**

J	F	M	A
M	J	J	A
S	O	N	D
#	#	#	#

symbols give month of record within square not the locality within square