

An intra-African migrant with at least two populations in Tanzania. While October is clearly the peak of the breeding season for much of the country birds are already at their nest in June in the lowlands of the East Usambara. There is a marked passage of birds along the shores of Lake Tanganyika and probably elsewhere.

# Wahlberg's Eagle

*Aquila wahlbergi*

711 plots from 1,371 records

Virgin Yellow-vented Bulbul squares **33**

Single YvB month **34**

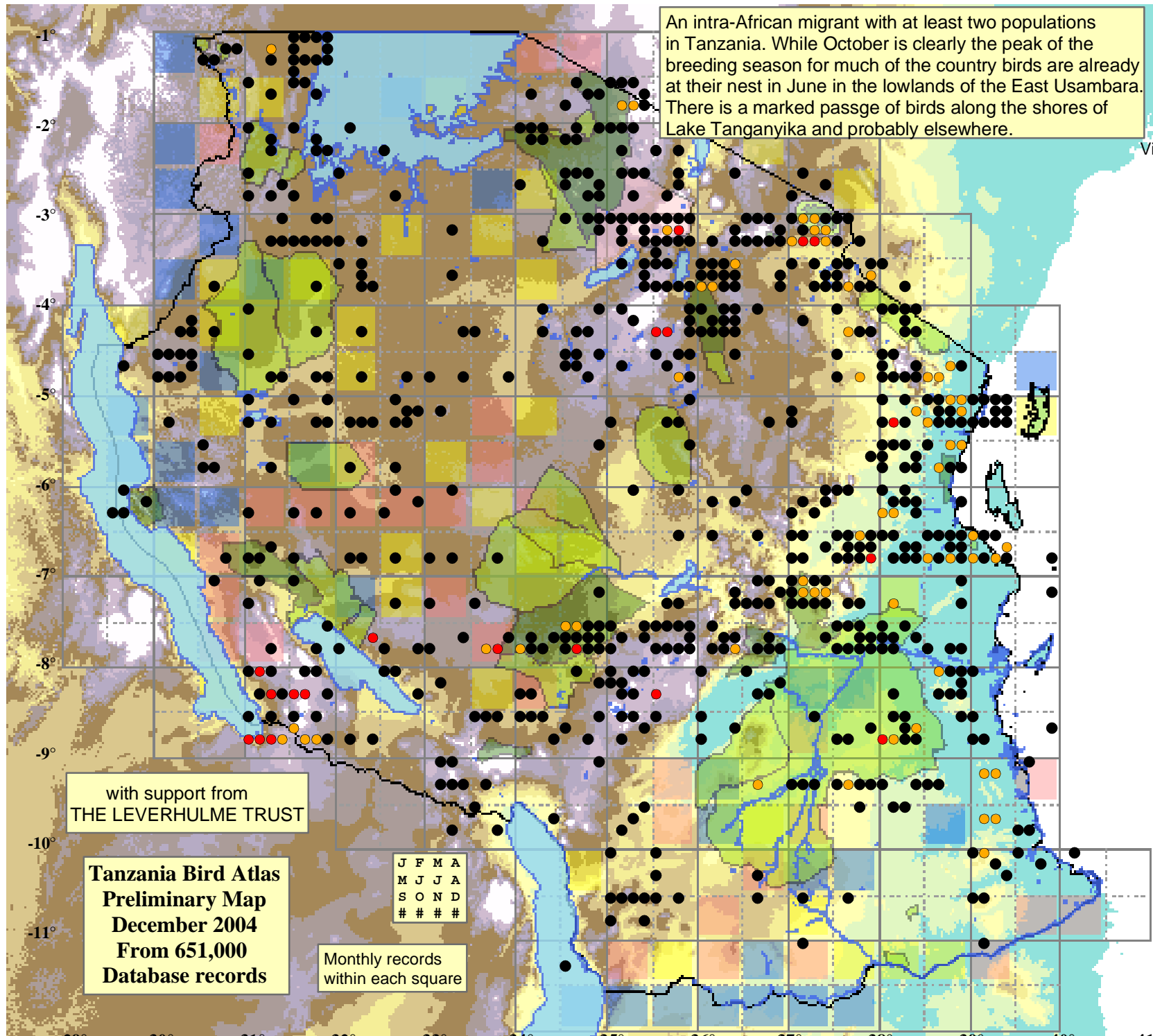
Two YvB months **30**

Seasonality

	presence	bs	eggs
January	168	2	-
February	123	6	1
March	107	5	-
April	61	3	-
May	16	1	-
June	27	4	-
July	50	7	1
August	124	8	1
September	142	16	6
October	135	18	8
November	161	13	4
December	147	3	1

- Status**
- Presence
  - Breeding season
  - Month with eggs

- Elevation (m)**
- 1 - 300
  - 300 - 500
  - 500 - 700
  - 700 - 900
  - 900 - 1,100
  - 1,100 - 1,300
  - 1,300 - 1,500
  - 1,500 - 1,700
  - 1,700 - 1,900
  - >1,900



with support from  
THE LEVERHULME TRUST

Tanzania Bird Atlas  
Preliminary Map  
December 2004  
From 651,000  
Database records

J	F	M	A
M	J	J	A
S	O	N	D
#	#	#	#

Monthly records within each square

29° 30° 31° 32° 33° 34° 35° 36° 37° 38° 39° 40° 41°