

# Long-legged Buzzard

*Buteo rufinus*

17 plots from 18 records

Virgin Yellow-vented Bulbul squares **33**

Single YvB month **34**

Two YvB months **30**

Seasonality  
presence bs eggs

Month	presence	bs	eggs
January	5	-	-
February	1	-	-
March	1	-	-
April	2	-	-
May	-	-	-
June	-	-	-
July	-	-	-
August	2	-	-
September	-	-	-
October	2	-	-
November	2	-	-
December	3	-	-

## Status

- Presence
- Breeding season
- Month with eggs

## Elevation (m)

- 1 - 300
- 300 - 500
- 500 - 700
- 700 - 900
- 900 - 1,100
- 1,100 - 1,300
- 1,300 - 1,500
- 1,500 - 1,700
- 1,700 - 1,900
- >1,900

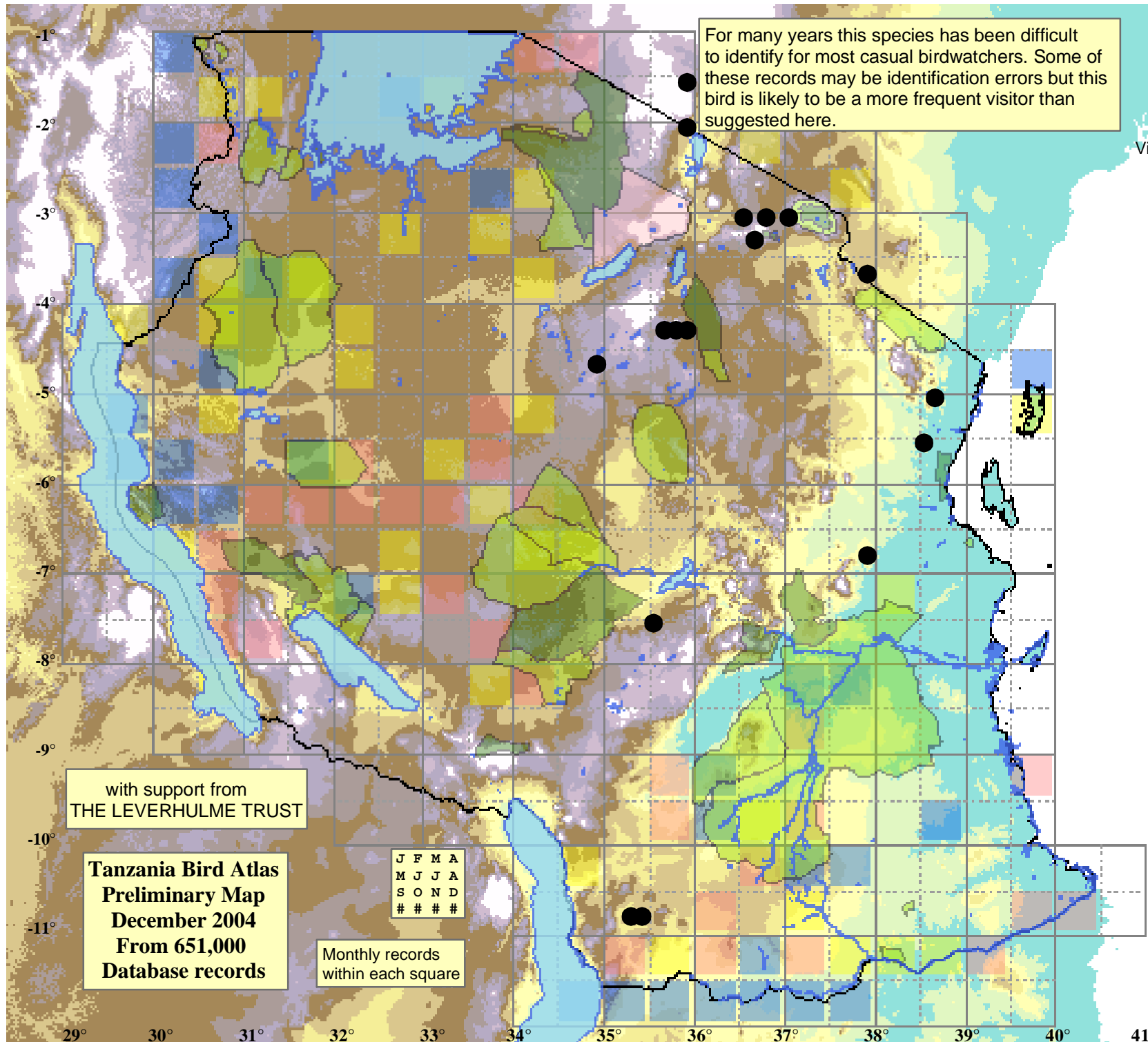
For many years this species has been difficult to identify for most casual birdwatchers. Some of these records may be identification errors but this bird is likely to be a more frequent visitor than suggested here.

with support from  
THE LEVERHULME TRUST

**Tanzania Bird Atlas**  
**Preliminary Map**  
**December 2004**  
**From 651,000**  
**Database records**

J	F	M	A
M	J	J	A
S	O	N	D
#	#	#	#

Monthly records  
within each square



29° 30° 31° 32° 33° 34° 35° 36° 37° 38° 39° 40° 41°