

# Mountain Buzzard

*Buteo tachardus*

221 plots from 531 records

Virgin Yellow-vented Bulbul squares **33**

Single YvB month **34**

Two YvB months **30**

Seasonality  
presence bs eggs

Month	presence	bs	eggs
January	52	2	-
February	48	1	-
March	34	-	-
April	30	-	-
May	19	-	-
June	33	-	-
July	39	-	-
August	41	1	-
September	49	1	-
October	60	4	2
November	51	5	-
December	53	5	1

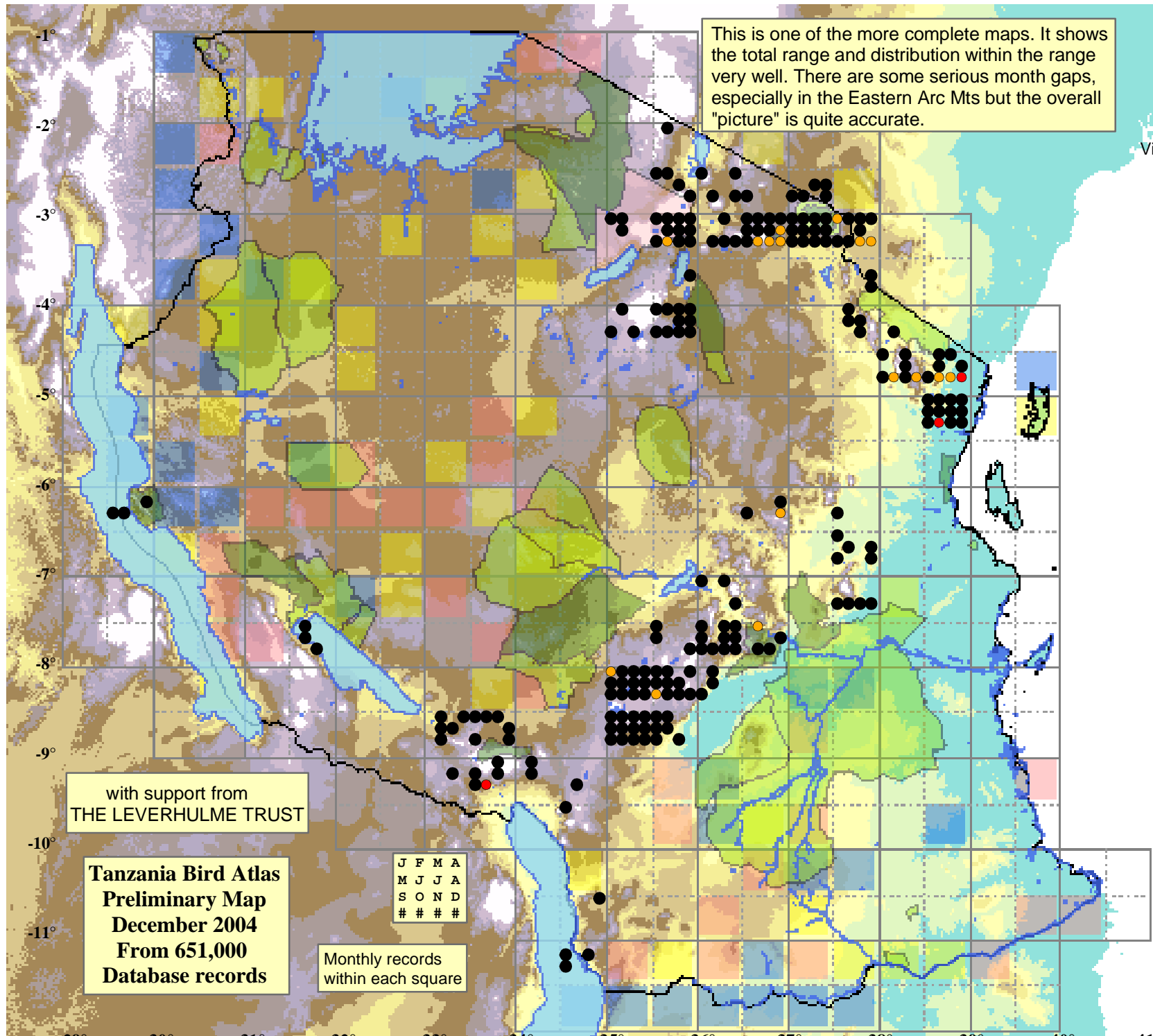
## Status

- Presence
- Breeding season
- Month with eggs

## Elevation (m)

- 1 - 300
- 300 - 500
- 500 - 700
- 700 - 900
- 900 - 1,100
- 1,100 - 1,300
- 1,300 - 1,500
- 1,500 - 1,700
- 1,700 - 1,900
- >1,900

This is one of the more complete maps. It shows the total range and distribution within the range very well. There are some serious month gaps, especially in the Eastern Arc Mts but the overall "picture" is quite accurate.



with support from  
THE LEVERHULME TRUST

Tanzania Bird Atlas  
Preliminary Map  
December 2004  
From 651,000  
Database records

J	F	M	A
M	J	J	A
S	O	N	D
#	#	#	#

Monthly records  
within each square

29° 30° 31° 32° 33° 34° 35° 36° 37° 38° 39° 40° 41°

-1°  
-2°  
-3°  
-4°  
-5°  
-6°  
-7°  
-8°  
-9°  
-10°  
-11°