

Booted Eagle

Hieraaetus pennatus

127 plots from 199 records

Virgin Yellow-vented Bulbul squares **33**

Single YvB month **34**

Two YvB months **30**

Seasonality

	presence	bs	eggs
January	25	-	-
February	38	-	-
March	31	-	-
April	7	-	-
May	1	-	-
June	3	-	-
July	2	-	-
August	1	-	-
September	8	-	-
October	24	-	-
November	34	-	-
December	24	-	-

- Status
- Presence
 - Breeding season
 - Month with eggs

- Elevation (m)
- 1 - 300
 - 300 - 500
 - 500 - 700
 - 700 - 900
 - 900 - 1,100
 - 1,100 - 1,300
 - 1,300 - 1,500
 - 1,500 - 1,700
 - 1,700 - 1,900
 - >1,900

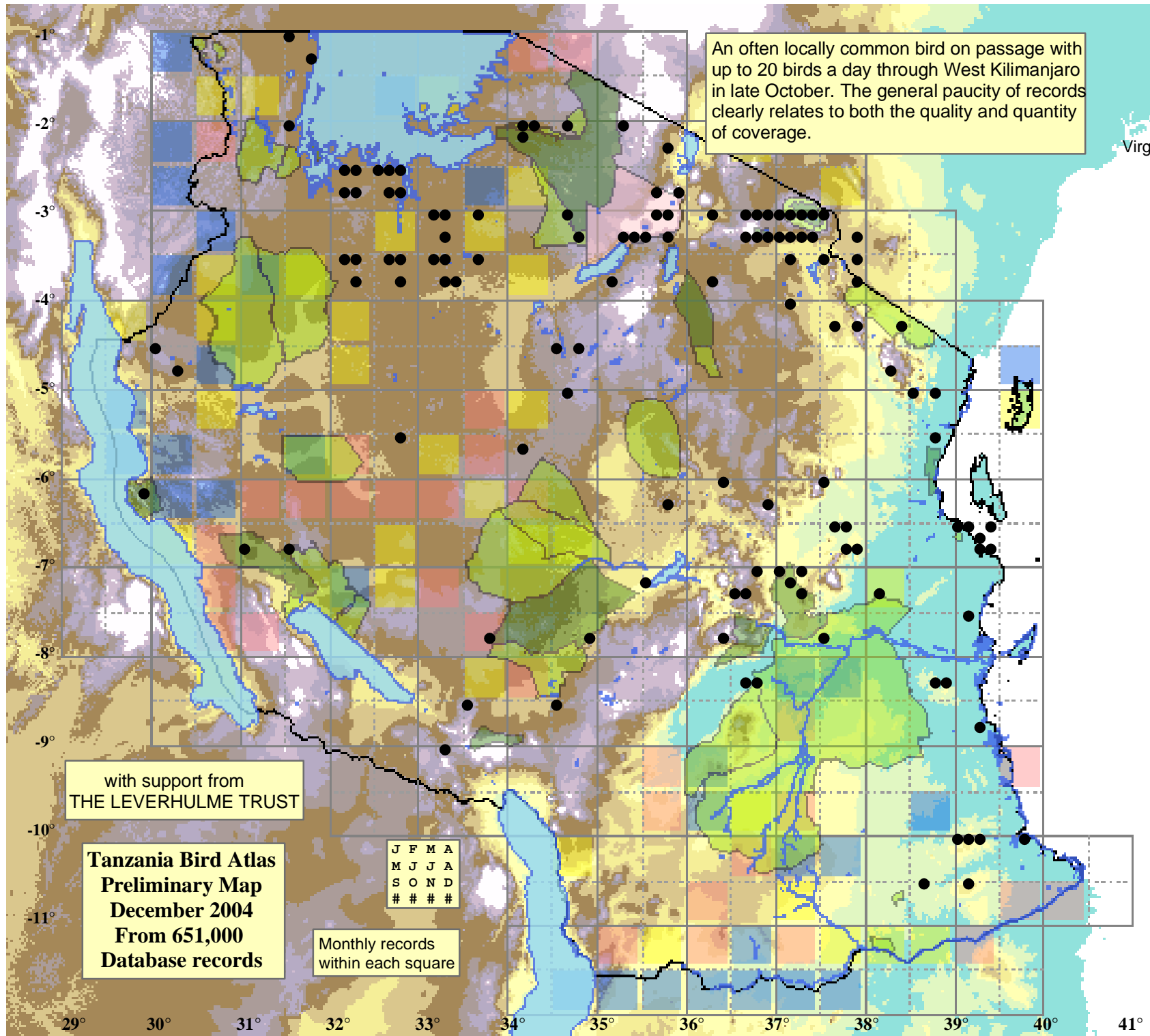
An often locally common bird on passage with up to 20 birds a day through West Kilimanjaro in late October. The general paucity of records clearly relates to both the quality and quantity of coverage.

with support from
THE LEVERHULME TRUST

Tanzania Bird Atlas
Preliminary Map
December 2004
From 651,000
Database records

J	F	M	A
M	J	J	A
S	O	N	D
#	#	#	#

Monthly records
within each square



29° 30° 31° 32° 33° 34° 35° 36° 37° 38° 39° 40° 41°

-1°
-2°
-3°
-4°
-5°
-6°
-7°
-8°
-9°
-10°
-11°