

# Crowned Eagle

*Stephanoaetus coronatus*

320 plots from 615 records

Virgin Yellow-vented Bulbul squares **33**

Single YvB month **34**

Two YvB months **30**

### Seasonality

presence bs eggs

Month	presence	bs	eggs
January	49	5	-
February	53	3	1
March	38	9	-
April	27	3	-
May	28	3	-
June	34	3	-
July	45	2	-
August	50	3	1
September	61	9	-
October	58	9	-
November	58	6	1
December	51	4	1

### Status

- Presence
- Breeding season
- Month with eggs

### Elevation (m)

- 1 - 300
- 300 - 500
- 500 - 700
- 700 - 900
- 900 - 1,100
- 1,100 - 1,300
- 1,300 - 1,500
- 1,500 - 1,700
- 1,700 - 1,900
- >1,900

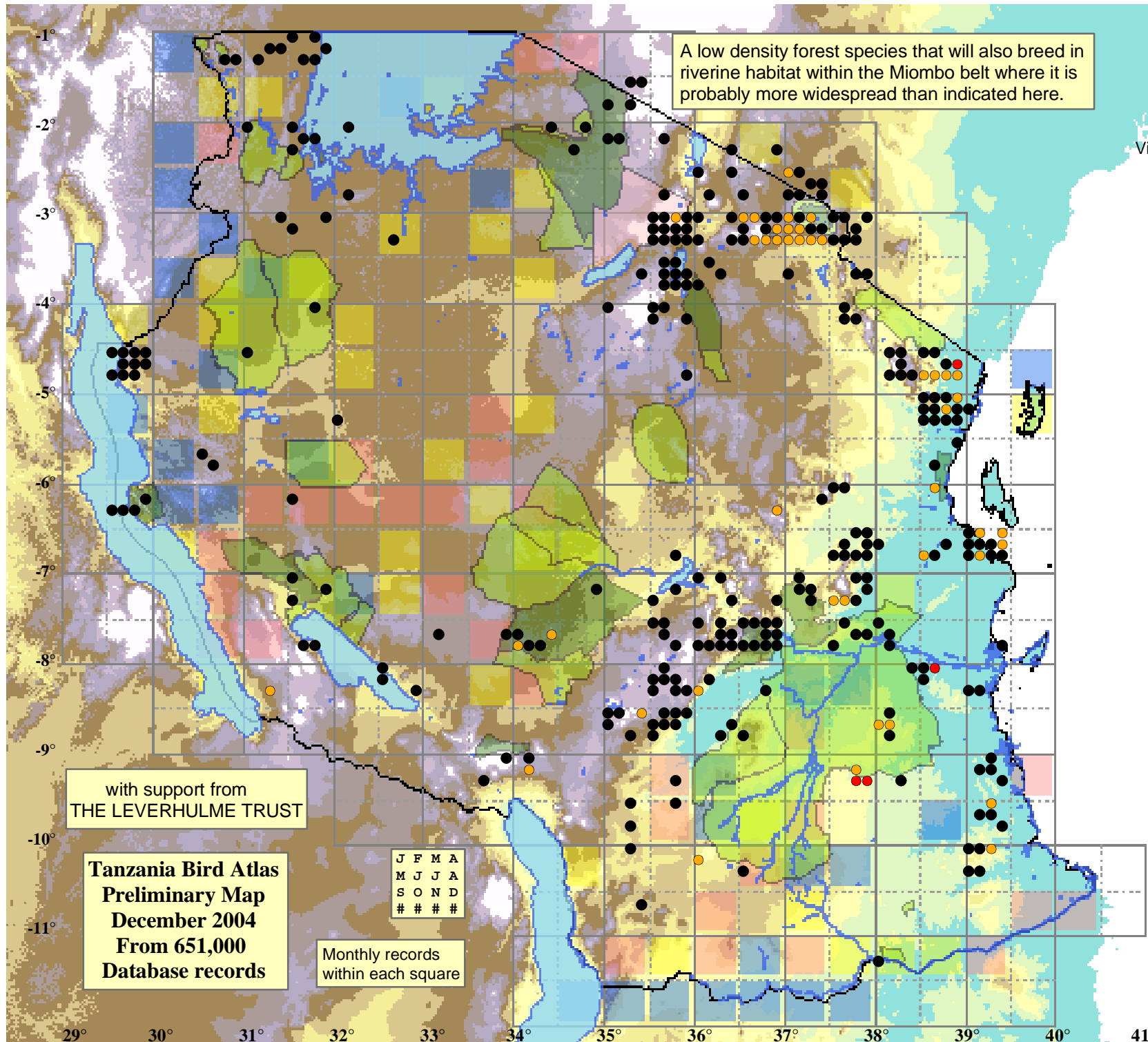
A low density forest species that will also breed in riverine habitat within the Miombo belt where it is probably more widespread than indicated here.

with support from  
THE LEVERHULME TRUST

Tanzania Bird Atlas  
Preliminary Map  
December 2004  
From 651,000  
Database records

J	F	M	A
M	J	J	A
S	O	N	D
#	#	#	#

Monthly records  
within each square



29° 30° 31° 32° 33° 34° 35° 36° 37° 38° 39° 40° 41°