

Bat Hawk

Macheiramphus alcinus

173 plots from 277 records

A widespread low density resident. Concentrations of records are clearly associated with resident observers, often in urban areas. The crepuscular habits of this bird greatly reduce the number of casual observations.

Virgin Yellow-vented Bulbul squares **18**

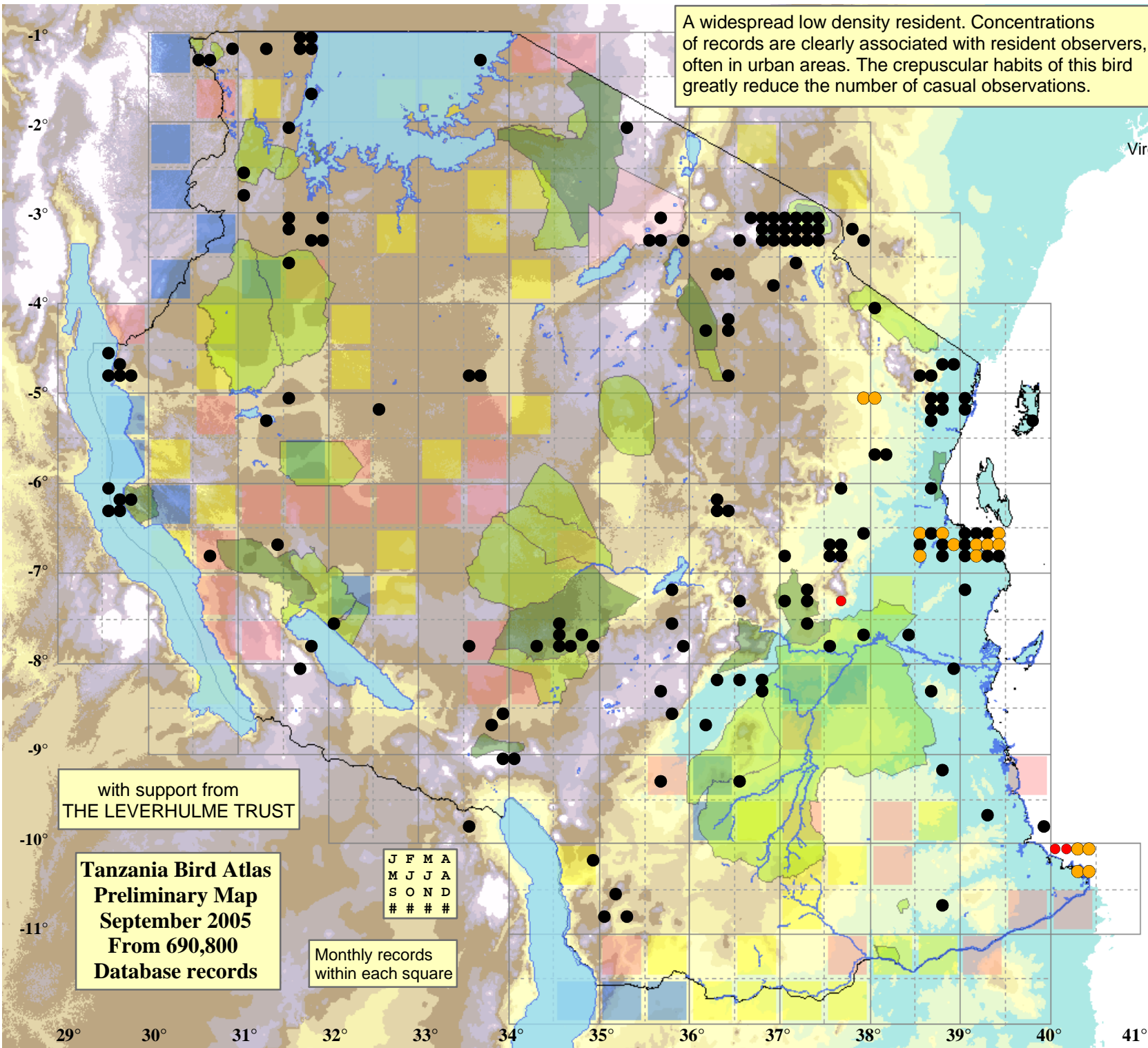
Single YvB month **36**

Two YvB months **35**

	Seasonality		
	presence	bs	eggs
January	17	2	1
February	16	-	1
March	11	2	-
April	12	3	-
May	14	-	-
June	20	1	-
July	40	1	-
August	26	2	-
September	36	4	-
October	23	1	1
November	23	1	-
December	18	1	-

- Status**
- Presence
 - Breeding season
 - Month with eggs

- Elevation (m)**
- 1 - 300
 - 300 - 500
 - 500 - 700
 - 700 - 900
 - 900 - 1,100
 - 1,100 - 1,300
 - 1,300 - 1,500
 - 1,500 - 1,700
 - 1,700 - 1,900
 - >1,900



with support from
THE LEVERHULME TRUST

Tanzania Bird Atlas
Preliminary Map
September 2005
From 690,800
Database records

J F M A
M J J A
S O N D
#

Monthly records
within each square

29° 30° 31° 32° 33° 34° 35° 36° 37° 38° 39° 40° 41°