

# African Hobby

*Falco cuvieri*

165 plots from 296 records

Virgin Yellow-vented Bulbul squares **11**

Single YvB month **21**

Two YvB months **25**

	Seasonality		
	presence	bs	eggs
January	45	-	-
February	20	-	-
March	32	-	-
April	18	-	-
May	8	-	-
June	5	-	-
July	12	-	-
August	22	1	-
September	33	3	2
October	25	4	-
November	30	-	-
December	29	1	-

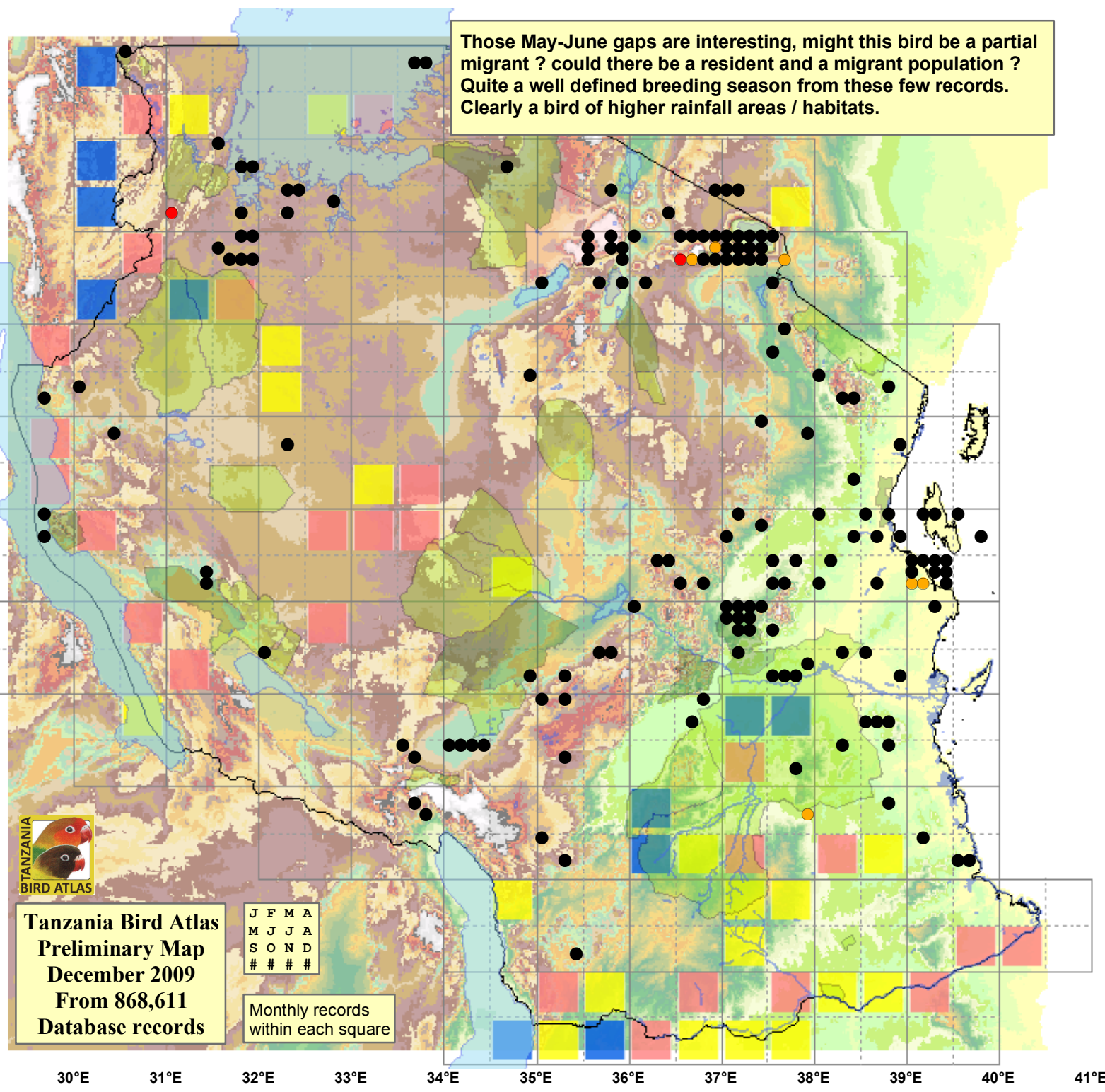
## Status

- Presence
- Breeding season
- Month with eggs

## 30m ASTER elevation

- 0 - 100
- 100 - 200
- 200 - 300
- 300 - 400
- 400 - 450
- 450 - 500
- 500 - 550
- 550 - 600
- 600 - 650
- 650 - 700
- 700 - 750
- 750 - 800
- 800 - 850
- 850 - 900
- 900 - 950
- 950 - 1,000
- 1,000 - 1,050
- 1,050 - 1,100
- 1,100 - 1,200
- 1,200 - 1,300
- 1,300 - 1,400
- 1,400 - 1,500
- 1,500 - 1,600
- 1,600 - 1,700
- 1,700 - 1,800
- 1,800 - 1,900
- 1,900 - 2,000
- 2,000 - 2,100
- 2,100 - 2,200
- 2,200 - 2,300
- 2,300 - 2,400
- 2,400 - 2,500

Those May-June gaps are interesting, might this bird be a partial migrant ? could there be a resident and a migrant population ? Quite a well defined breeding season from these few records. Clearly a bird of higher rainfall areas / habitats.



**Tanzania Bird Atlas**  
**Preliminary Map**  
**December 2009**  
**From 868,611**  
**Database records**

J F M A  
M J J A  
S O N D  
# # # #

Monthly records  
within each square