

# Dickinson's Kestrel

*Falco dickinsoni*

221 plots from 451 records

Virgin Yellow-vented Bulbul squares **11**

Single YvB month **21**

Two YvB months **25**

### Seasonality

	presence	bs	eggs
January	34	2	-
February	34	-	-
March	36	-	-
April	25	-	-
May	39	-	-
June	52	1	-
July	57	-	-
August	42	-	-
September	33	1	1
October	40	-	1
November	20	1	2
December	29	1	-
month 13	1		

### Species

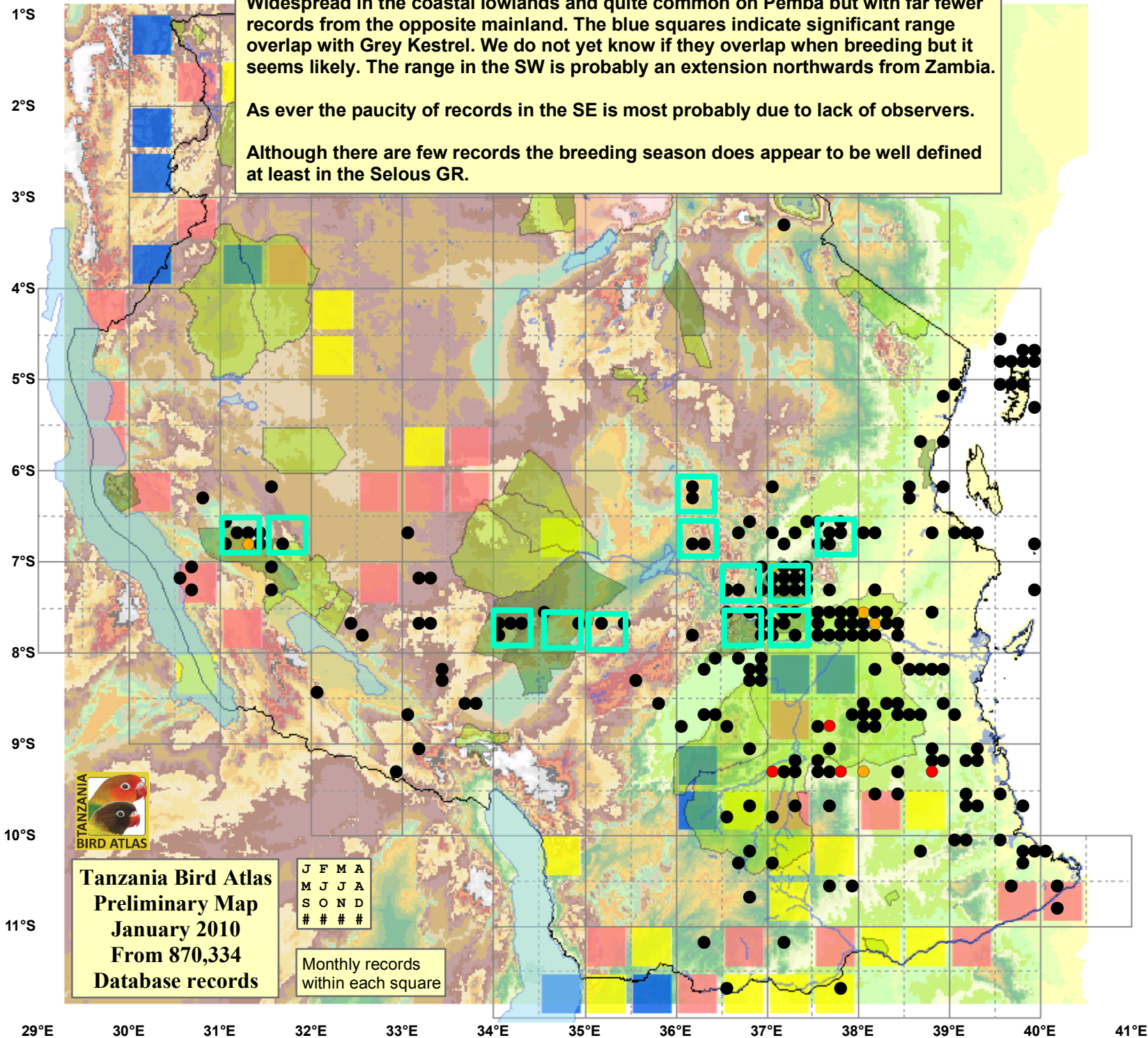
#### Status

- Presence
- Breeding season
- Month with eggs

Widespread in the coastal lowlands and quite common on Pemba but with far fewer records from the opposite mainland. The blue squares indicate significant range overlap with Grey Kestrel. We do not yet know if they overlap when breeding but it seems likely. The range in the SW is probably an extension northwards from Zambia.

As ever the paucity of records in the SE is most probably due to lack of observers.

Although there are few records the breeding season does appear to be well defined at least in the Selous GR.



Tanzania Bird Atlas  
Preliminary Map  
January 2010  
From 870,334  
Database records

J	F	M	A
M	J	J	A
S	O	N	D
#	#	#	#

Monthly records  
within each square