

# Dickinson's Kestrel

*Falco dickinsoni*

217 plots from 431 records

Virgin Yellow-vented Bulbul squares **14**

Single YvB month **29**

Two YvB months **30**

**Seasonality**  
presence bs eggs

Month	presence	bs	eggs
January	33	2	-
February	34	-	-
March	35	-	-
April	24	-	-
May	35	-	-
June	49	1	-
July	55	-	-
August	41	-	-
September	31	1	1
October	40	-	1
November	18	-	2
December	27	-	-
month 13	1	-	-

**Status**

- Presence
- Breeding season
- Month with eggs

**Elevation (m)**

- 1 - 300
- 300 - 500
- 500 - 700
- 700 - 900
- 900 - 1,100
- 1,100 - 1,300
- 1,300 - 1,500
- 1,500 - 1,700
- 1,700 - 1,900
- >1,900

A southern African species reaching its northern limits in Tanzania with a few odd records from southern Kenya that match this single observation from Moshi. Largely allopatric with Grey Kestrel but does overlap in range (if not breeding range) at the level of the Atlas Square throughout its northern limits.

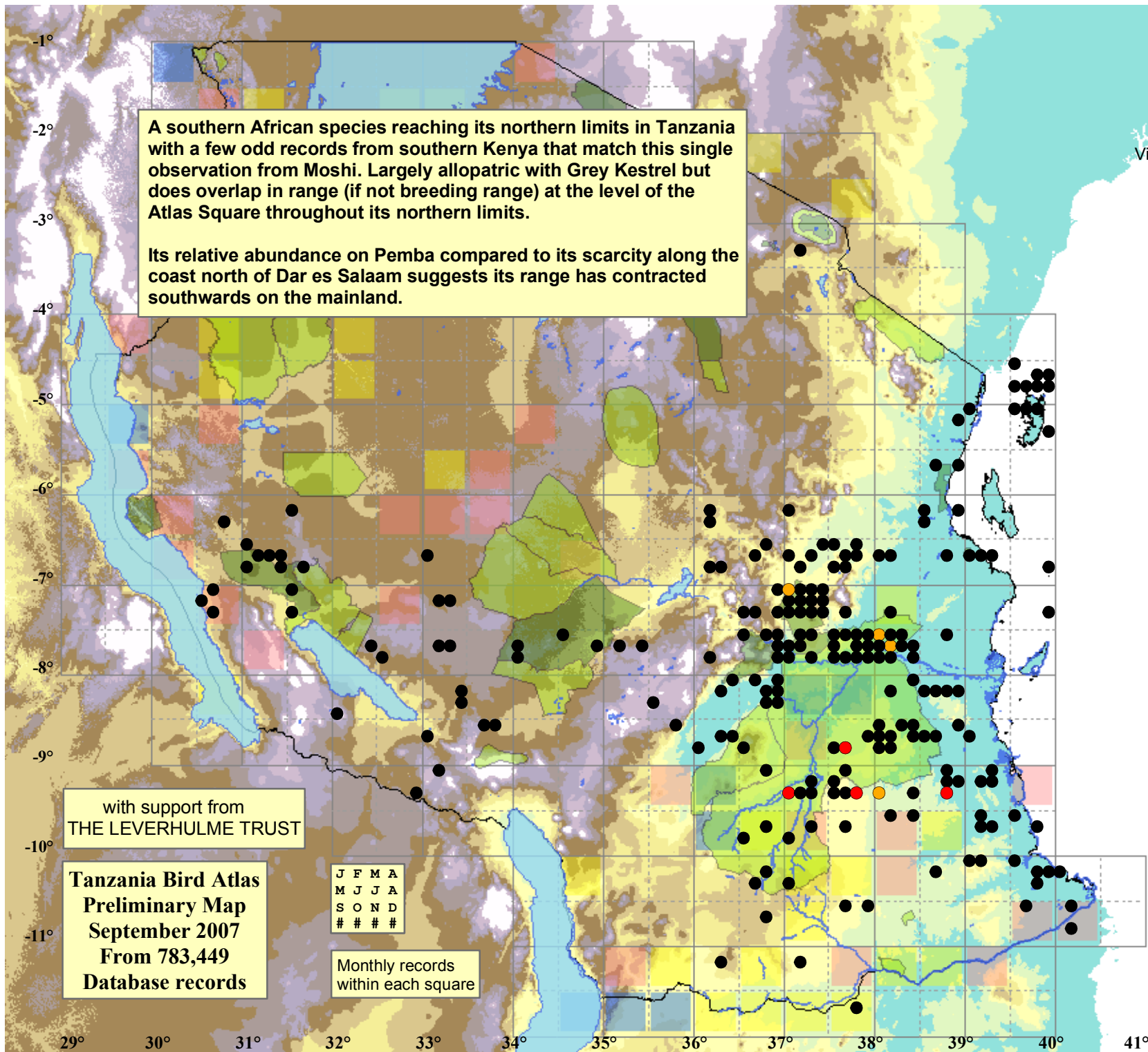
Its relative abundance on Pemba compared to its scarcity along the coast north of Dar es Salaam suggests its range has contracted southwards on the mainland.

with support from  
THE LEVERHULME TRUST

Tanzania Bird Atlas  
Preliminary Map  
September 2007  
From 783,449  
Database records

J	F	M	A
M	J	J	A
S	O	N	D
#	#	#	#

Monthly records  
within each square



29° 30° 31° 32° 33° 34° 35° 36° 37° 38° 39° 40° 41°

-1°  
-2°  
-3°  
-4°  
-5°  
-6°  
-7°  
-8°  
-9°  
-10°  
-11°