

# African Finfoot

*Podica senegalensis*

57 plots from 63 records

Virgin Yellow-vented Bulbul squares **12**

Single YvB month **21**

Two YvB months **24**

**Seasonality**  
presence bs eggs

January	1	-	-
February	5	-	-
March	5	-	-
April	3	-	-
May	2	1	-
June	9	-	-
July	7	-	-
August	8	-	-
September	7	1	-
October	2	-	-
November	5	-	-
December	4	-	-

**Status**

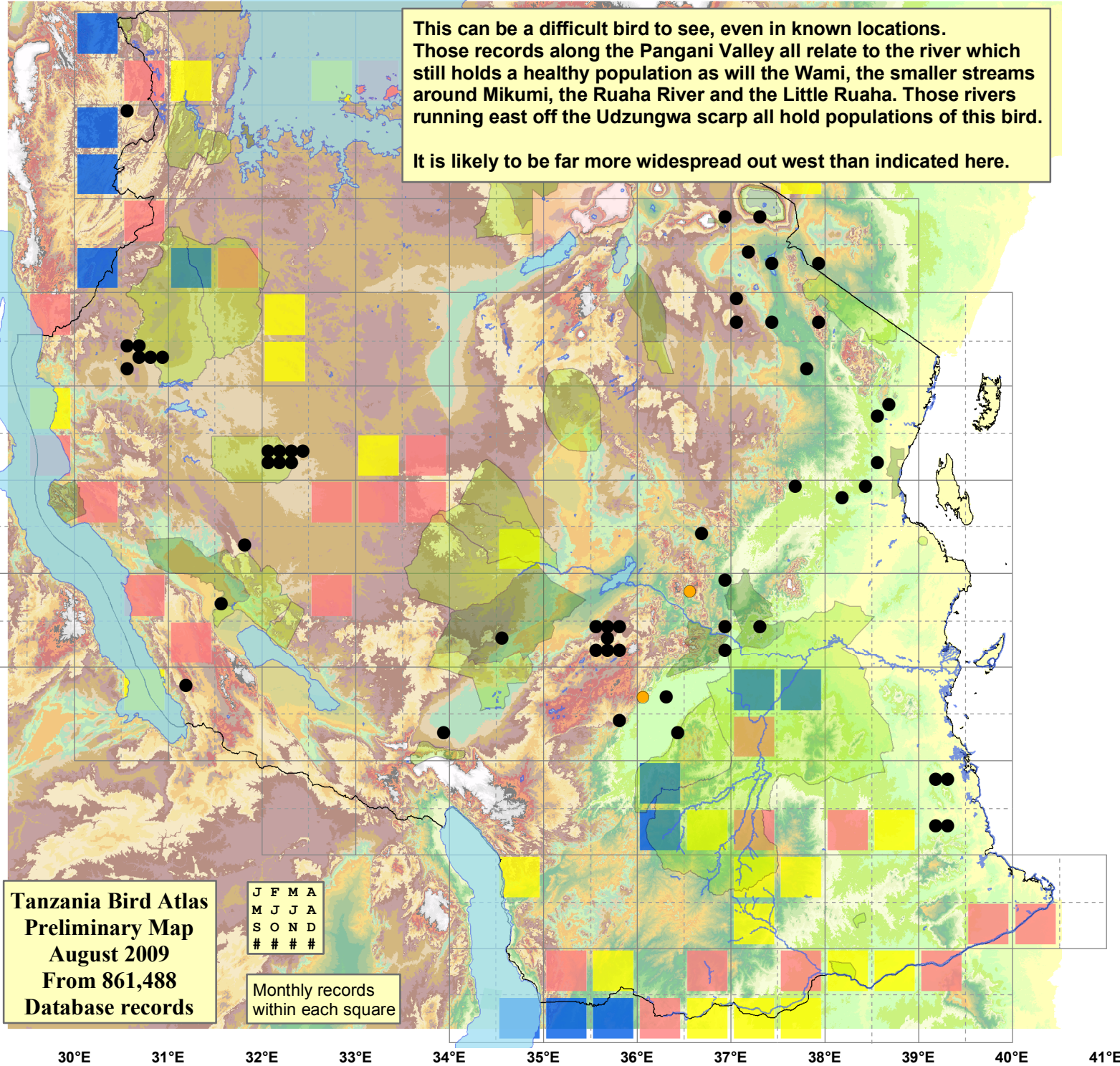
- Presence
- Breeding season
- Month with eggs

**30m SRTM**

- 0 - 100
- 100 - 200
- 200 - 300
- 300 - 400
- 400 - 450
- 450 - 500
- 500 - 550
- 550 - 600
- 600 - 650
- 650 - 700
- 700 - 750
- 750 - 800
- 800 - 850

- 850 - 900
- 900 - 950
- 950 - 1,000
- 1,000 - 1,050
- 1,050 - 1,100
- 1,100 - 1,200
- 1,200 - 1,300
- 1,300 - 1,400
- 1,400 - 1,500
- 1,500 - 1,600
- 1,600 - 1,700
- 1,700 - 1,800
- 1,800 - 1,900
- 1,900 - 2,000
- 2,000 - 2,100
- 2,100 - 2,200
- 2,200 - 2,300
- 2,300 - 2,400
- 2,400 - 2,500

This can be a difficult bird to see, even in known locations. Those records along the Pangani Valley all relate to the river which still holds a healthy population as will the Wami, the smaller streams around Mikumi, the Ruaha River and the Little Ruaha. Those rivers running east off the Udzungwa scarp all hold populations of this bird. It is likely to be far more widespread out west than indicated here.



**Tanzania Bird Atlas**  
Preliminary Map  
August 2009  
From 861,488  
Database records

J	F	M	A
M	J	J	A
S	O	N	D
#	#	#	#

Monthly records within each square