

With coastal, northern and western breeding records it is not easy to discuss movements of this species within the country except to say it does move and presumably on a regular and seasonal basis. The data suggests dry season breeding and recently burnt ground is always a good place to search for this bird.

# Senegal Plover

*Vanellus lugubris*

300 plots from 484 records

Virgin Yellow-vented Bulbul squares **13**

Single YvB month **25**

Two YvB months **28**

The 1% threshold is only 350 birds but this is not a congregatory species and the Wader Atlas maps sites of 2-10, 11-25 & 26-44 birds with only one 2-10 site for Tanzania.

### Seasonality

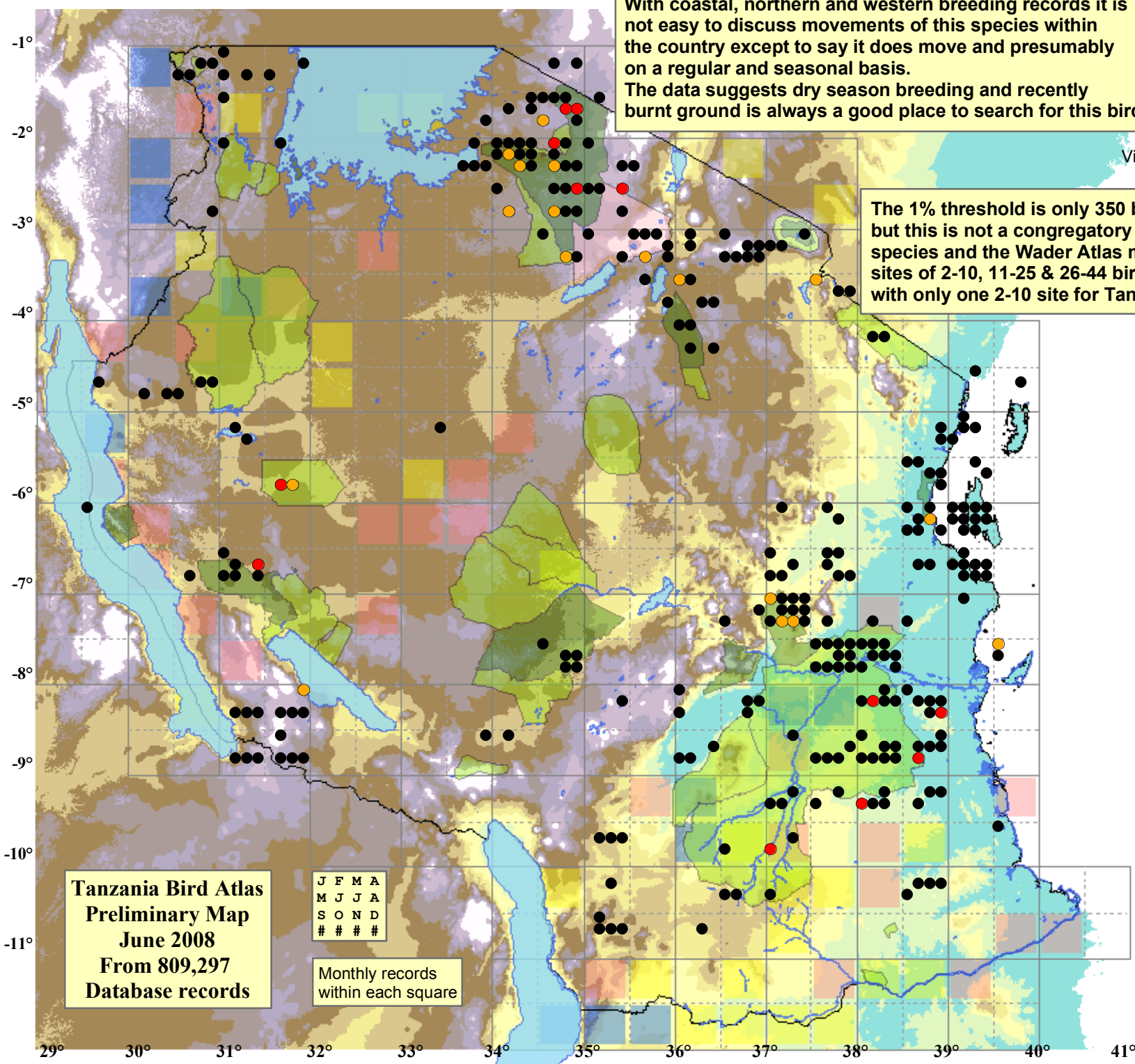
	presence	bs	eggs
January	57	5	-
February	42	-	1
March	19	-	-
April	8	1	2
May	8	-	-
June	43	2	1
July	52	1	1
August	43	-	2
September	30	1	2
October	42	8	4
November	40	4	-
December	64	-	1

### Species

- Presence
- Breeding season
- Eggs in nest

### Elevation (m)

- 1 - 300
- 300 - 500
- 500 - 700
- 700 - 900
- 900 - 1,100
- 1,100 - 1,300
- 1,300 - 1,500
- 1,500 - 1,700
- 1,700 - 1,900
- >1,900



Tanzania Bird Atlas  
Preliminary Map  
June 2008  
From 809,297  
Database records

J	F	M	A
M	J	J	A
S	O	N	D
#	#	#	#

Monthly records  
within each square