

Widespread and familiar but not gregarious and "substantial" numbers will only occur at the largest sites. The 1% threshold is 20,000 birds and will not be attained in Africa. Kirby & Scott (draft Wader Atlas) use >2 million birds for this population but can only find country estimates for 167,000 in Africa suggesting these are low by a factor of 10.

Common Sandpiper

Actitis hypoleucos

862 plots from 2,579 records

- Virgin Yellow-vented Bulbul squares **13**
- Single YvB month **25**
- Two YvB months **28**

Baker (1996) gave an estimate of >25,000 for Tanzania, it could be at least double this.

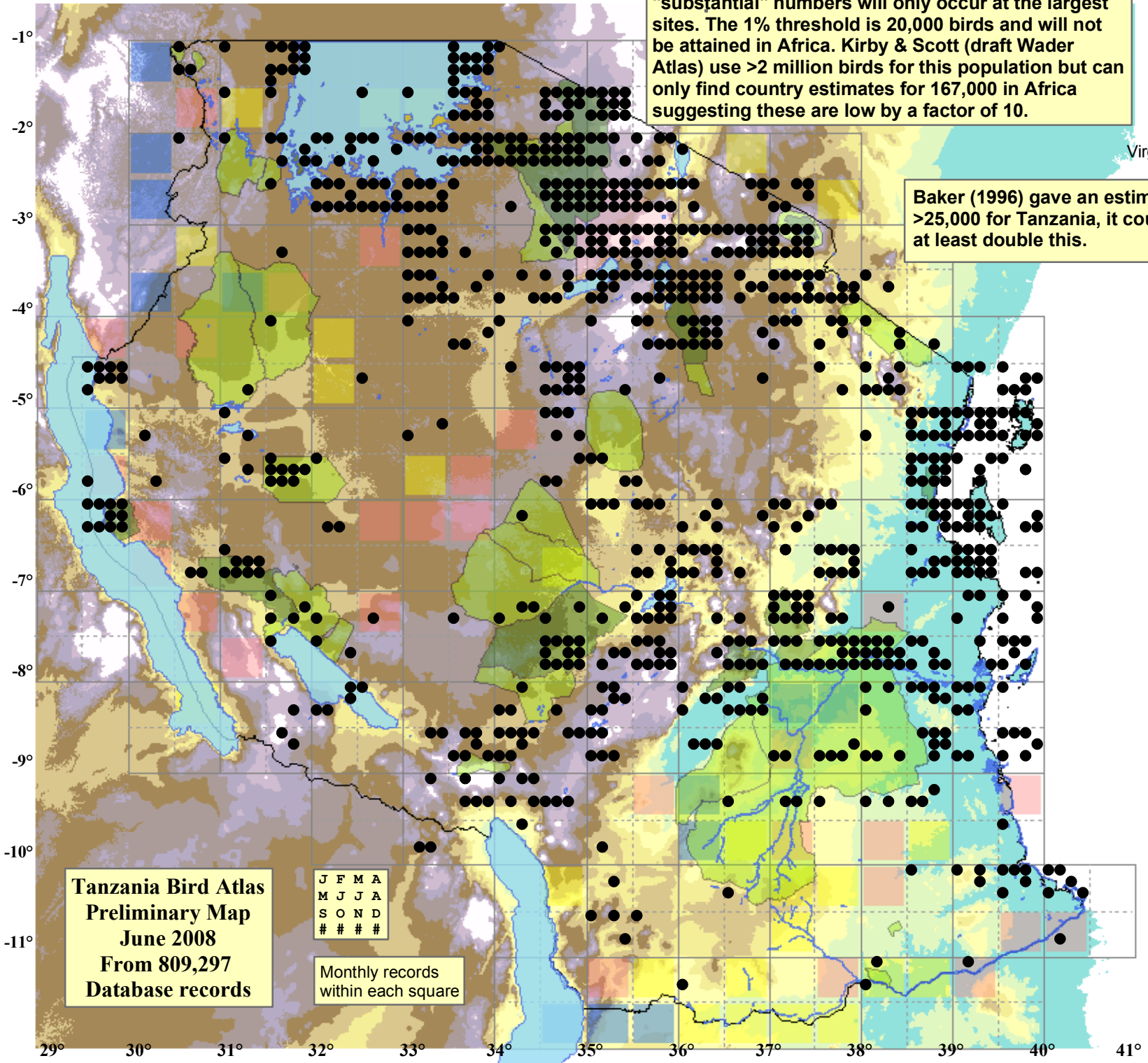
	Seasonality	
	presence	bs eggs
January	489	- -
February	264	- -
March	242	- -
April	140	- -
May	32	- -
June	30	- -
July	131	- -
August	245	- -
September	256	- -
October	303	- -
November	204	- -
December	239	- -
month 13	4	- -

status

● Presence

Elevation (m)

- 1 - 300
- 300 - 500
- 500 - 700
- 700 - 900
- 900 - 1,100
- 1,100 - 1,300
- 1,300 - 1,500
- 1,500 - 1,700
- 1,700 - 1,900
- >1,900



Tanzania Bird Atlas
Preliminary Map
June 2008
From 809,297
Database records

J	F	M	A
M	J	J	A
S	O	N	D
#	#	#	#

Monthly records
within each square

29° 30° 31° 32° 33° 34° 35° 36° 37° 38° 39° 40° 41°