

Sanderling

Calidris alba

110 plots from 293 records

Virgin Yellow-vented Bulbul squares **13**

Single YvB month **25**

Two YvB months **27**

Seasonality
presence bs eggs

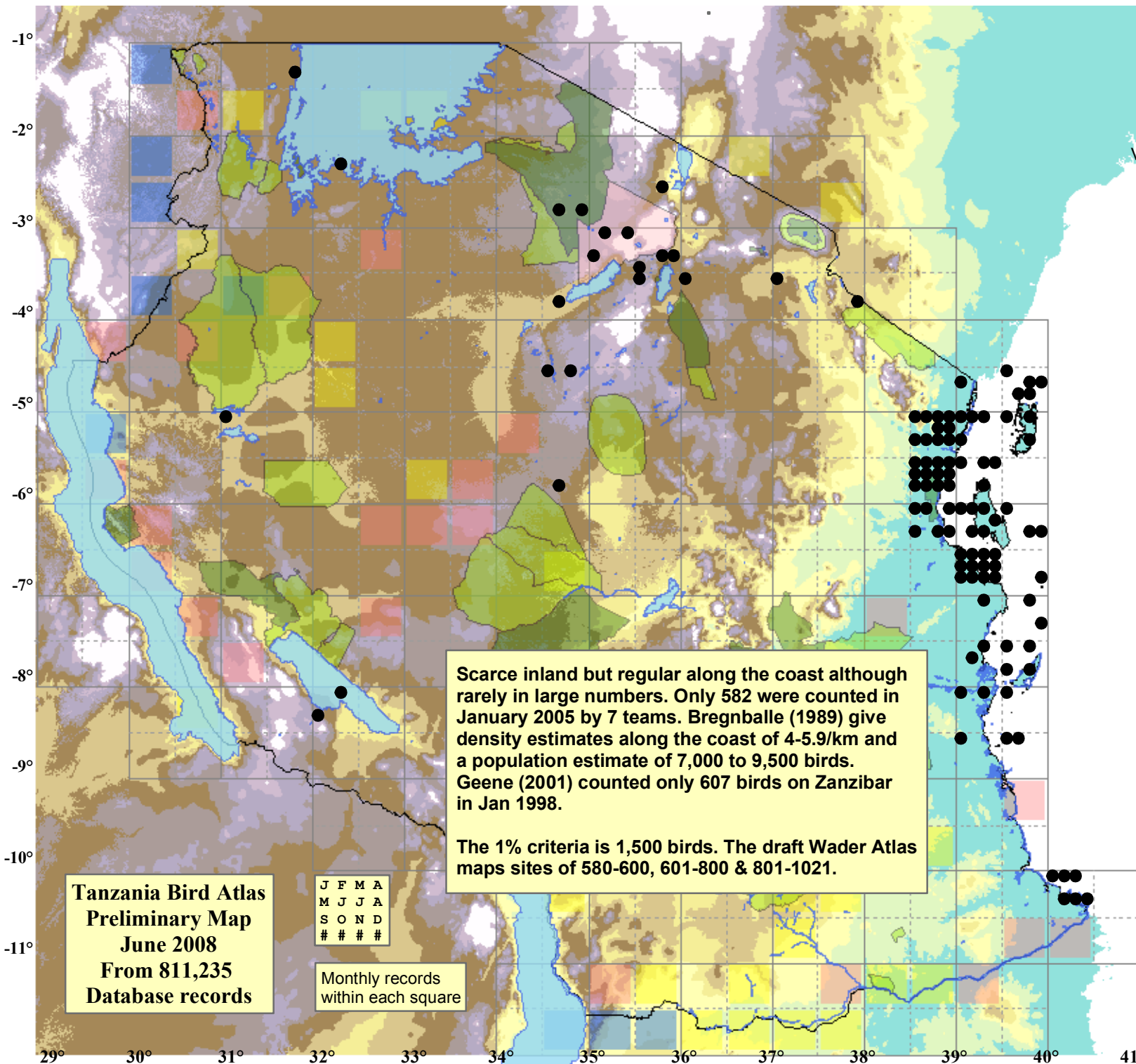
| | | | |
|-----------|----|---|---|
| January | 65 | - | - |
| February | 22 | - | - |
| March | 35 | - | - |
| April | 17 | - | - |
| May | 3 | - | - |
| June | 4 | - | - |
| July | 5 | - | - |
| August | 18 | - | - |
| September | 26 | - | - |
| October | 28 | - | - |
| November | 28 | - | - |
| December | 41 | - | - |
| month 13 | 1 | - | - |

status

● Presence

Elevation (m)

- 1 - 300
- 300 - 500
- 500 - 700
- 700 - 900
- 900 - 1,100
- 1,100 - 1,300
- 1,300 - 1,500
- 1,500 - 1,700
- 1,700 - 1,900
- >1,900



Scarce inland but regular along the coast although rarely in large numbers. Only 582 were counted in January 2005 by 7 teams. Bregnballe (1989) give density estimates along the coast of 4-5.9/km and a population estimate of 7,000 to 9,500 birds. Geene (2001) counted only 607 birds on Zanzibar in Jan 1998.

The 1% criteria is 1,500 birds. The draft Wader Atlas maps sites of 580-600, 601-800 & 801-1021.

Tanzania Bird Atlas
Preliminary Map
June 2008
From 811,235
Database records

J F M A
M J J A
S O N D
#

Monthly records
within each square