

Violet-tipped Courser

Rhinoptilus chalconotus

211 plots from 318 records

Virgin Yellow-vented Bulbul squares **13**

Single YvB month **25**

Two YvB months **28**

Seasonality
presence bs eggs

Month	presence	bs	eggs
January	37	1	2
February	26	-	2
March	28	-	-
April	29	-	-
May	52	2	-
June	39	-	-
July	29	-	-
August	11	1	-
September	10	-	4
October	8	1	1
November	8	-	-
December	23	1	3

Status

- Presence
- Breeding season
- Month with eggs

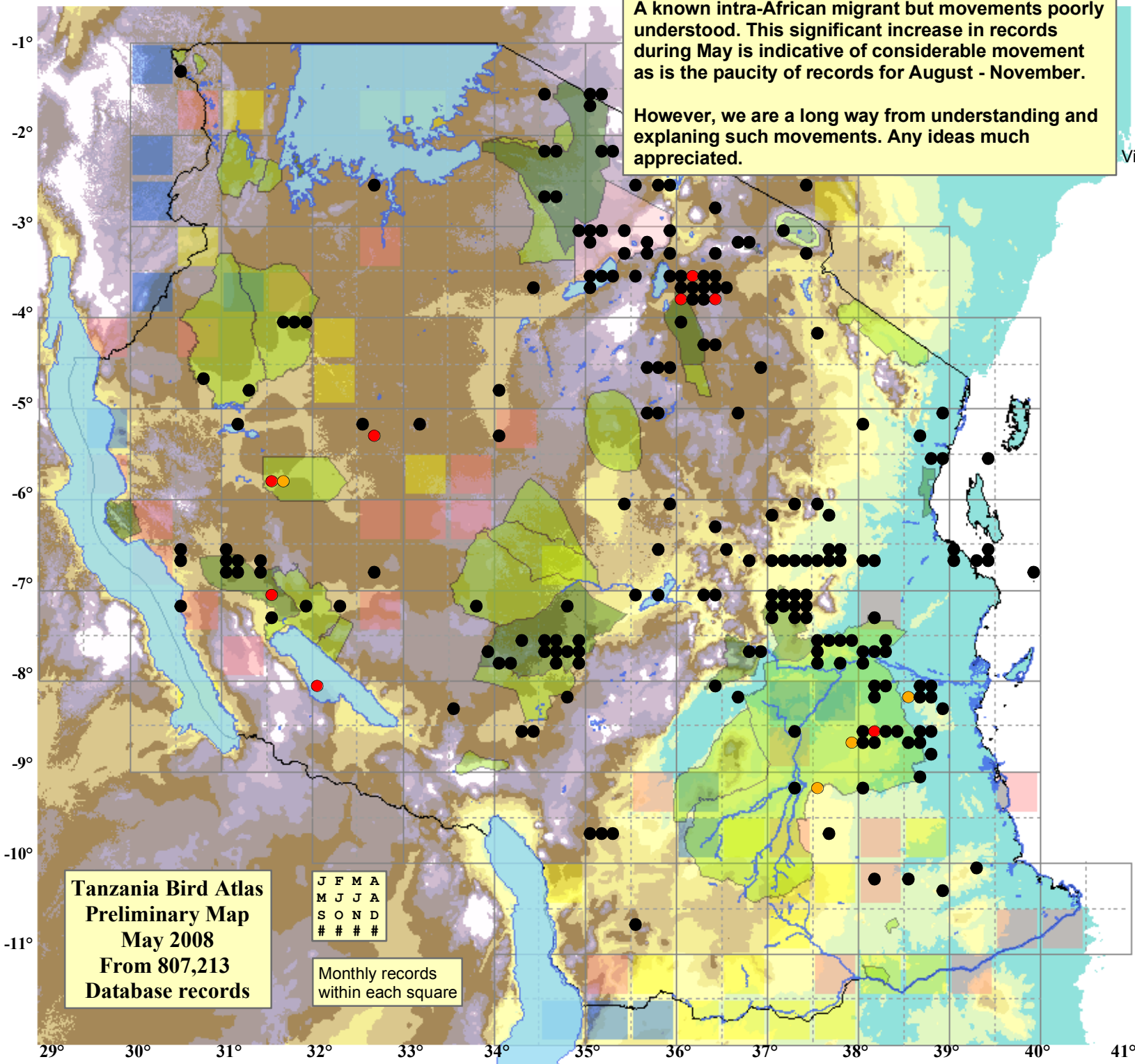
Elevation (m)

VALUE

- 1 - 300
- 300 - 500
- 500 - 700
- 700 - 900
- 900 - 1,100
- 1,100 - 1,300
- 1,300 - 1,500
- 1,500 - 1,700
- 1,700 - 1,900
- >1,900

A known intra-African migrant but movements poorly understood. This significant increase in records during May is indicative of considerable movement as is the paucity of records for August - November.

However, we are a long way from understanding and explaining such movements. Any ideas much appreciated.



Tanzania Bird Atlas
Preliminary Map
May 2008
From 807,213
Database records

J	F	M	A
M	J	J	A
S	O	N	D
#	#	#	#

Monthly records
within each square