

Violet-tipped Courser

Rhinoptilus chalcopterus

188 plots from 282 records

Virgin Yellow-vented Bulbul squares **34**

Single YvB month **34**

Two YvB months **32**

Seasonality

	presence	bs	eggs
January	31	1	2
February	24	-	2
March	25	-	-
April	27	-	-
May	48	2	-
June	37	-	-
July	23	-	-
August	8	1	-
September	7	4	-
October	6	1	1
November	6	-	-
December	22	1	3

Status

- Presence
- Breeding season
- Month with eggs

Protected Areas

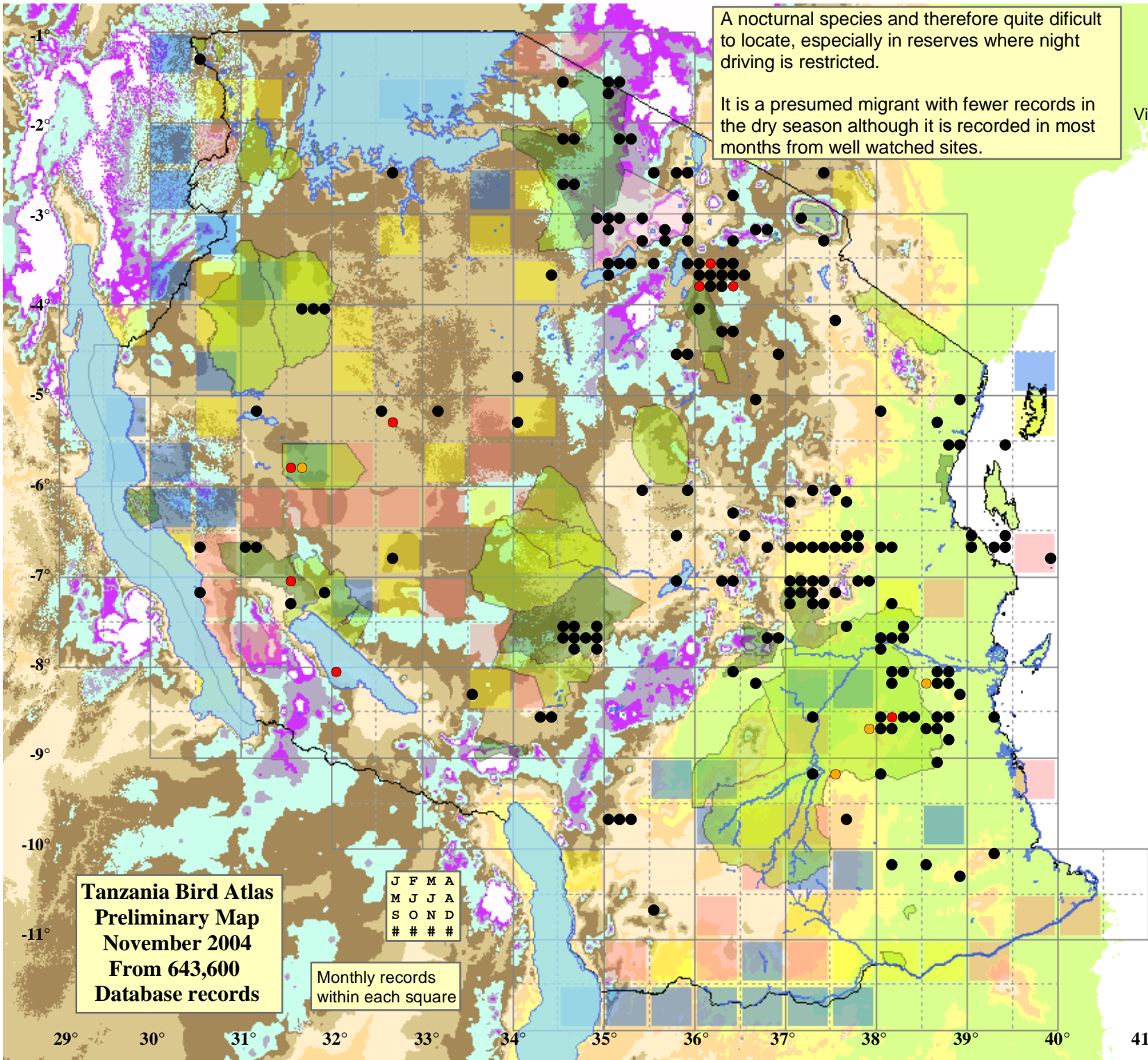
- National Park
- Game Reserve
- Conservation Area

Elevation (m)

- 1 - 400
- 400 - 600
- 600 - 800
- 800 - 1,000
- 1,000 - 1,200
- 1,200 - 1,400
- 1,400 - 1,600
- 1,600 - 1,800
- 1,800 - 2,000
- >2,000

A nocturnal species and therefore quite difficult to locate, especially in reserves where night driving is restricted.

It is a presumed migrant with fewer records in the dry season although it is recorded in most months from well watched sites.



Tanzania Bird Atlas
Preliminary Map
November 2004
From 643,600
Database records

J	F	M	A
M	J	J	A
S	O	N	D
#	#	#	#

Monthly records
 within each square

29° 30° 31° 32° 33° 34° 35° 36° 37° 38° 39° 40° 41°

-1°
-2°
-3°
-4°
-5°
-6°
-7°
-8°
-9°
-10°
-11°