

Heuglin's Courser

Rhinoptilus cinctus

171 plots from 278 records

Virgin Yellow-vented Bulbul squares **34**

Single YvB month **34**

Two YvB months **32**

	Seasonality		
	presence	bs	eggs
January	30	-	-
February	29	1	-
March	24	-	1
April	24	-	-
May	20	-	-
June	24	-	3
July	22	-	1
August	29	1	1
September	13	-	-
October	11	-	4
November	18	1	2
December	19	-	-

Status

- Presence
- Breeding season
- Month with eggs

Protected Areas

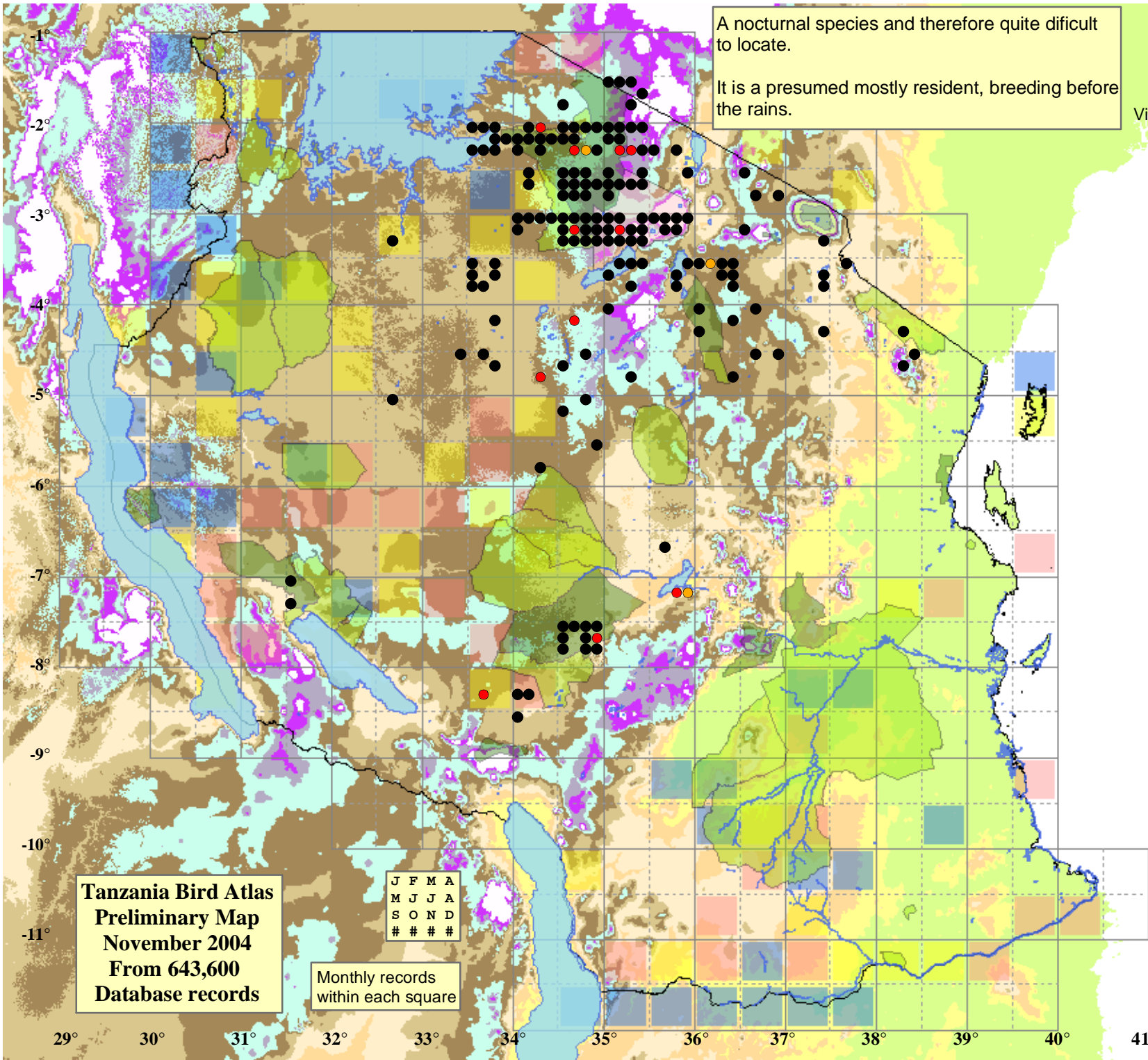
- National Park
- Game Reserve
- Conservation Area

Elevation (m)

- 1 - 400
- 400 - 600
- 600 - 800
- 800 - 1,000
- 1,000 - 1,200
- 1,200 - 1,400
- 1,400 - 1,600
- 1,600 - 1,800
- 1,800 - 2,000
- >2,000

A nocturnal species and therefore quite difficult to locate.

It is a presumed mostly resident, breeding before the rains.



Tanzania Bird Atlas
Preliminary Map
 November 2004
 From 643,600
 Database records

J	F	M	A
M	J	J	A
S	O	N	D
#	#	#	#

Monthly records
 within each square

29° 30° 31° 32° 33° 34° 35° 36° 37° 38° 39° 40° 41°

-1°
-2°
-3°
-4°
-5°
-6°
-7°
-8°
-9°
-10°
-11°