

Eastern Grey Plantain Eater

Crinifer zonurus

139 plots from 264 records

Species Status

- Presence
- Breeding season
- Month with eggs

Virgin Yellow-vented Bulbul squares **16**

Single YvB month **35**

Two YvB months **32**

Seasonality

	presence	bs	eggs
January	34	-	-
February	27	1	1
March	13	1	-
April	16	-	-
May	12	-	-
June	16	1	-
July	30	-	1
August	20	-	-
September	19	1	-
October	21	-	-
November	27	-	-
December	21	-	-
Undated	2		

Elevation (m)

VALUE

- 1 - 300
- 300 - 500
- 500 - 700
- 700 - 900
- 900 - 1,100
- 1,100 - 1,300
- 1,300 - 1,500
- 1,500 - 1,700
- 1,700 - 1,900
- >1,900

This western species reaches its south-eastern limits in the Lake Victoria basin. It presumably still occurs on Ukerewe Island but this is the densest rural population in Tanzania so will not be much habitat left.

It should occur along the streams flowing eastwards from the Burundi Highlands. However this general area is underworked and has suffered serious degradation at the hands of successive waves of Burundian and Rwandan refugees since the early 70s.

There should be more records from the underworked Kagera River Basin and from the northern Serengeti.

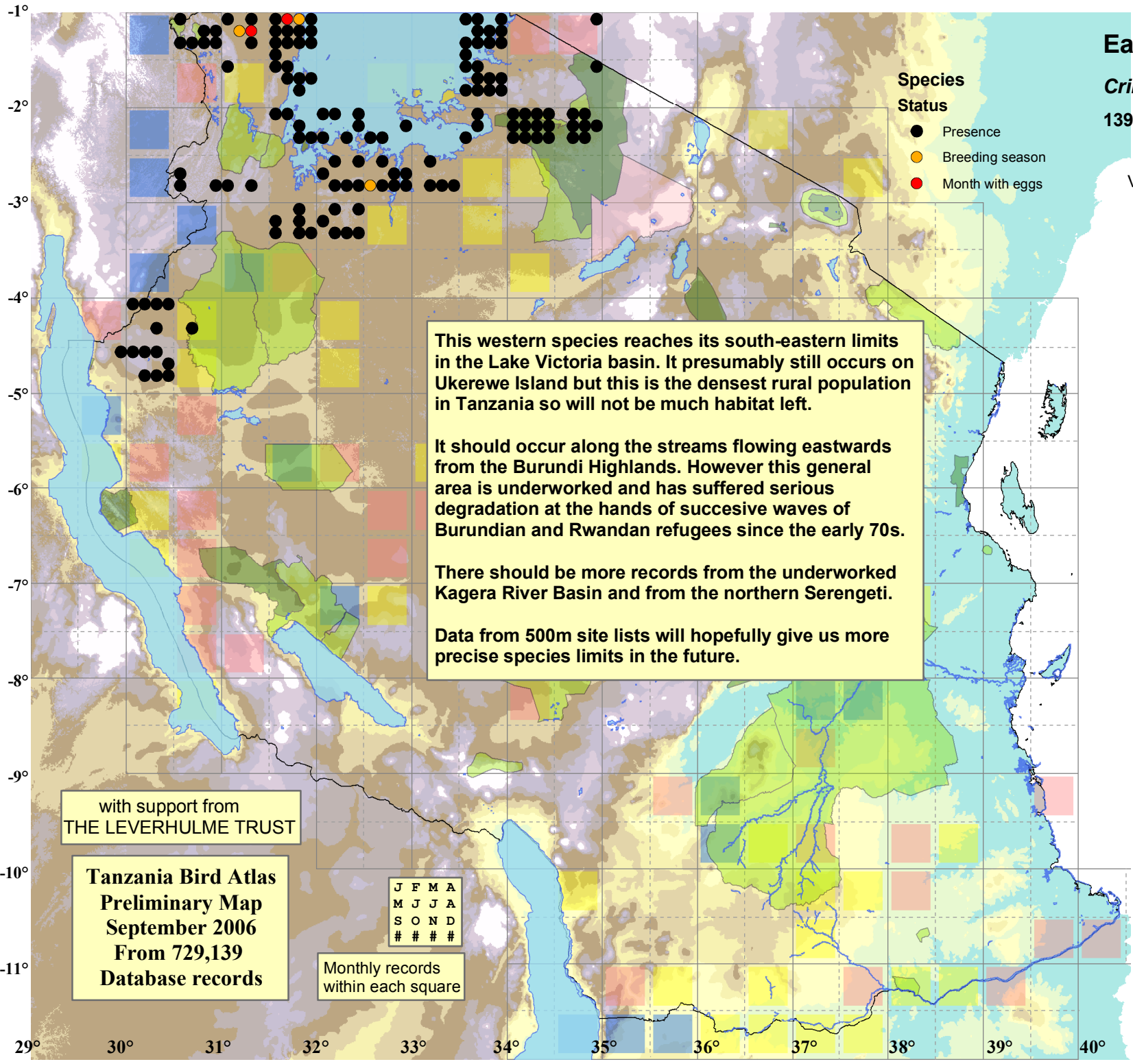
Data from 500m site lists will hopefully give us more precise species limits in the future.

with support from
THE LEVERHULME TRUST

Tanzania Bird Atlas
Preliminary Map
September 2006
From 729,139
Database records

J	F	M	A
M	J	J	A
S	O	N	D
#	#	#	#

Monthly records within each square



29° 30° 31° 32° 33° 34° 35° 36° 37° 38° 39° 40°