

Violet-crested Turaco

Turaco porphyreolophus

582 plots from 1,017 records

Virgin Yellow-vented Bulbul squares **33**

Single YvB month **31**

Two YvB months **31**

Seasonality
presence bs eggs

Month	presence	bs	eggs
January	100	3	-
February	73	-	-
March	70	1	1
April	61	-	-
May	58	-	-
June	69	-	-
July	82	1	-
August	88	2	-
September	90	2	-
October	103	-	-
November	107	-	-
December	102	1	-

Status

- Presence
- Breeding season
- Month with eggs

Elevation (m)

- 1 - 300
- 300 - 500
- 500 - 700
- 700 - 900
- 900 - 1,100
- 1,100 - 1,300
- 1,300 - 1,500
- 1,500 - 1,700
- 1,700 - 1,900
- >1,900

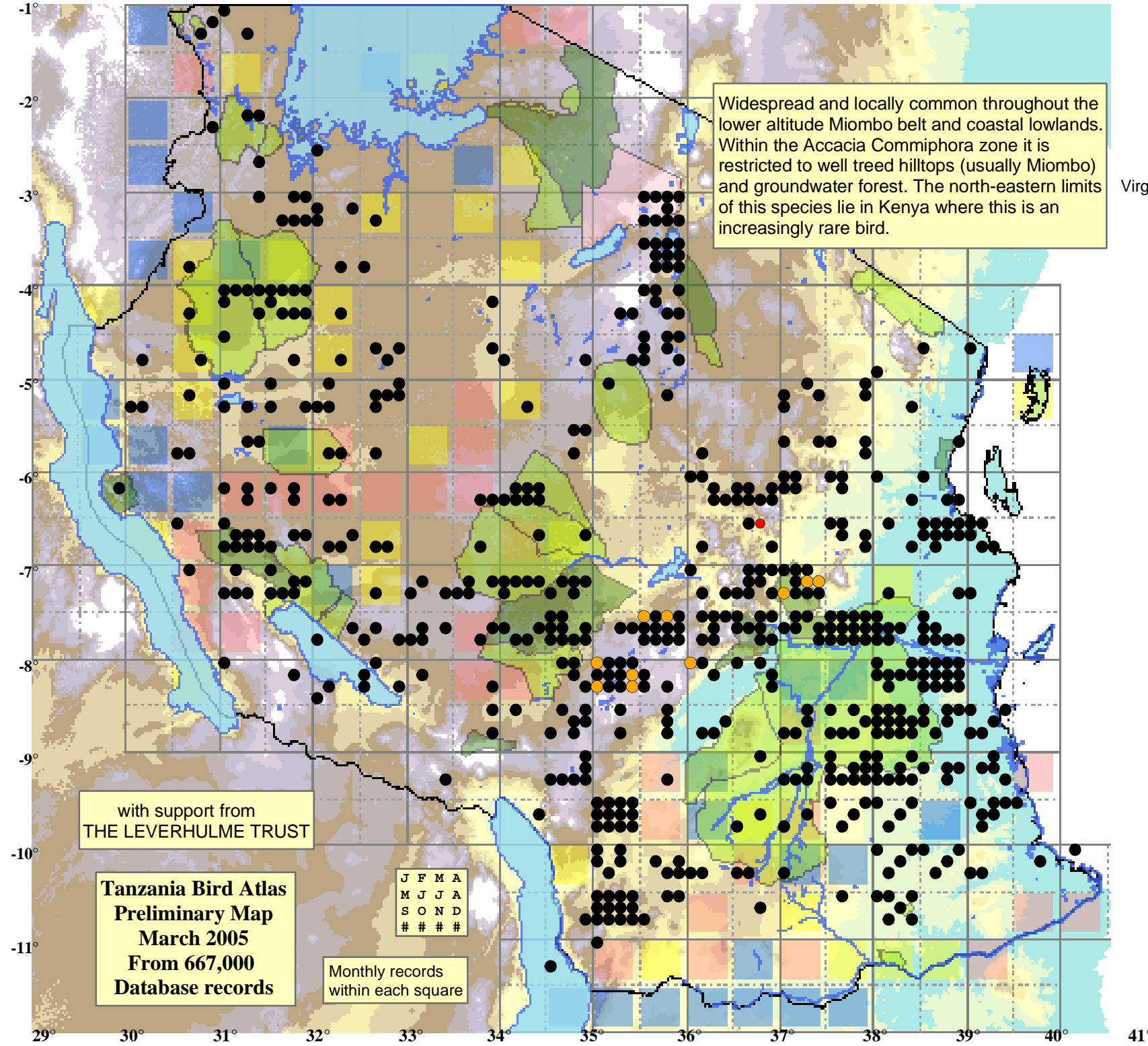
Widespread and locally common throughout the lower altitude Miombo belt and coastal lowlands. Within the Accacia Commiphora zone it is restricted to well treed hilltops (usually Miombo) and groundwater forest. The north-eastern limits of this species lie in Kenya where this is an increasingly rare bird.

with support from
THE LEVERHULME TRUST

Tanzania Bird Atlas
Preliminary Map
March 2005
From 667,000
Database records

J	F	M	A
#	#	#	#
M	J	J	A
#	#	#	#
S	O	N	D
#	#	#	#

Monthly records
within each square



29° 30° 31° 32° 33° 34° 35° 36° 37° 38° 39° 40° 41°

-1°
-2°
-3°
-4°
-5°
-6°
-7°
-8°
-9°
-10°
-11°