

# White-faced Owl

*Ptilopsis granti*

202 plots from 291 records

Virgin Yellow-vented Bulbul squares **13**

Single YvB month **25**

Two YvB months **28**

### Seasonality presence bs eggs

Month	presence	bs	eggs
January	23	-	-
February	42	-	-
March	20	-	-
April	15	-	-
May	14	-	-
June	39	-	-
July	35	1	-
August	28	2	-
September	26	2	-
October	18	-	-
November	19	-	-
December	12	-	-

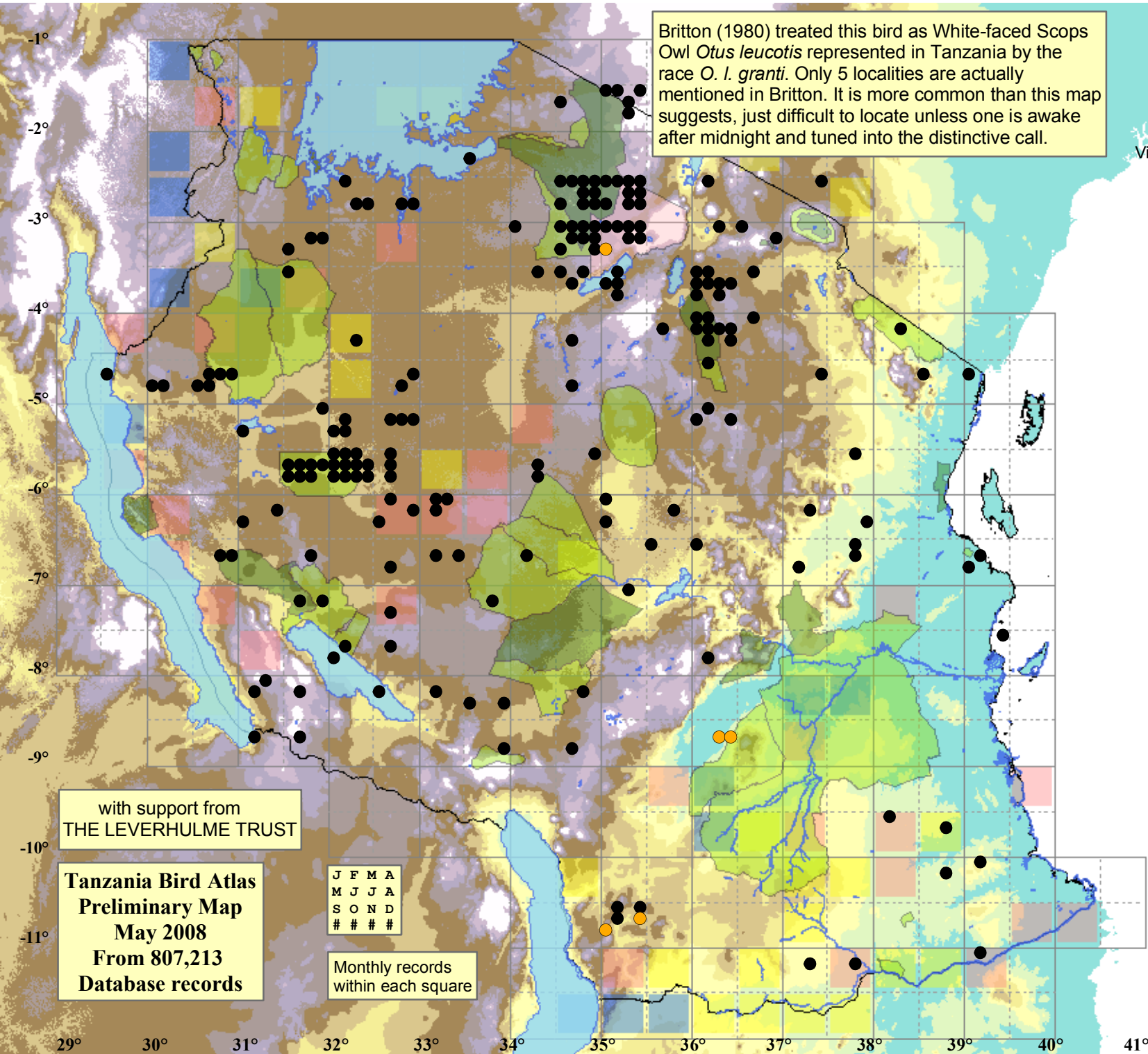
### Status

- Presence
- Breeding season
- Month with eggs

### Elevation (m)

- 1 - 300
- 300 - 500
- 500 - 700
- 700 - 900
- 900 - 1,100
- 1,100 - 1,300
- 1,300 - 1,500
- 1,500 - 1,700
- 1,700 - 1,900
- >1,900

Britton (1980) treated this bird as White-faced Scops Owl *Otus leucotis* represented in Tanzania by the race *O. l. granti*. Only 5 localities are actually mentioned in Britton. It is more common than this map suggests, just difficult to locate unless one is awake after midnight and tuned into the distinctive call.



with support from  
THE LEVERHULME TRUST

**Tanzania Bird Atlas**  
**Preliminary Map**  
**May 2008**  
**From 807,213**  
**Database records**

J	F	M	A
M	J	J	A
S	O	N	D
#	#	#	#

Monthly records  
within each square

29° 30° 31° 32° 33° 34° 35° 36° 37° 38° 39° 40° 41°