

# Bohm's Spinetail *Neafrapus boehmi*

205 plots from 338 records

Virgin Yellow-vented Bulbul squares **34**

Single YvB month **38**

Two YvB months **35**

### Seasonality presence bs eggs

| Month     | presence | bs | eggs |
|-----------|----------|----|------|
| January   | 15       | -  | -    |
| February  | 13       | -  | -    |
| March     | 35       | -  | -    |
| April     | 18       | -  | -    |
| May       | 19       | -  | -    |
| June      | 28       | 1  | -    |
| July      | 43       | -  | -    |
| August    | 40       | -  | -    |
| September | 33       | -  | -    |
| October   | 30       | -  | -    |
| November  | 27       | -  | -    |
| December  | 34       | -  | -    |

### Status

- Presence
- Breeding season
- Month with eggs

### Protected Areas

- National Park
- Game Reserve
- Conservation Area

### Elevation (m)

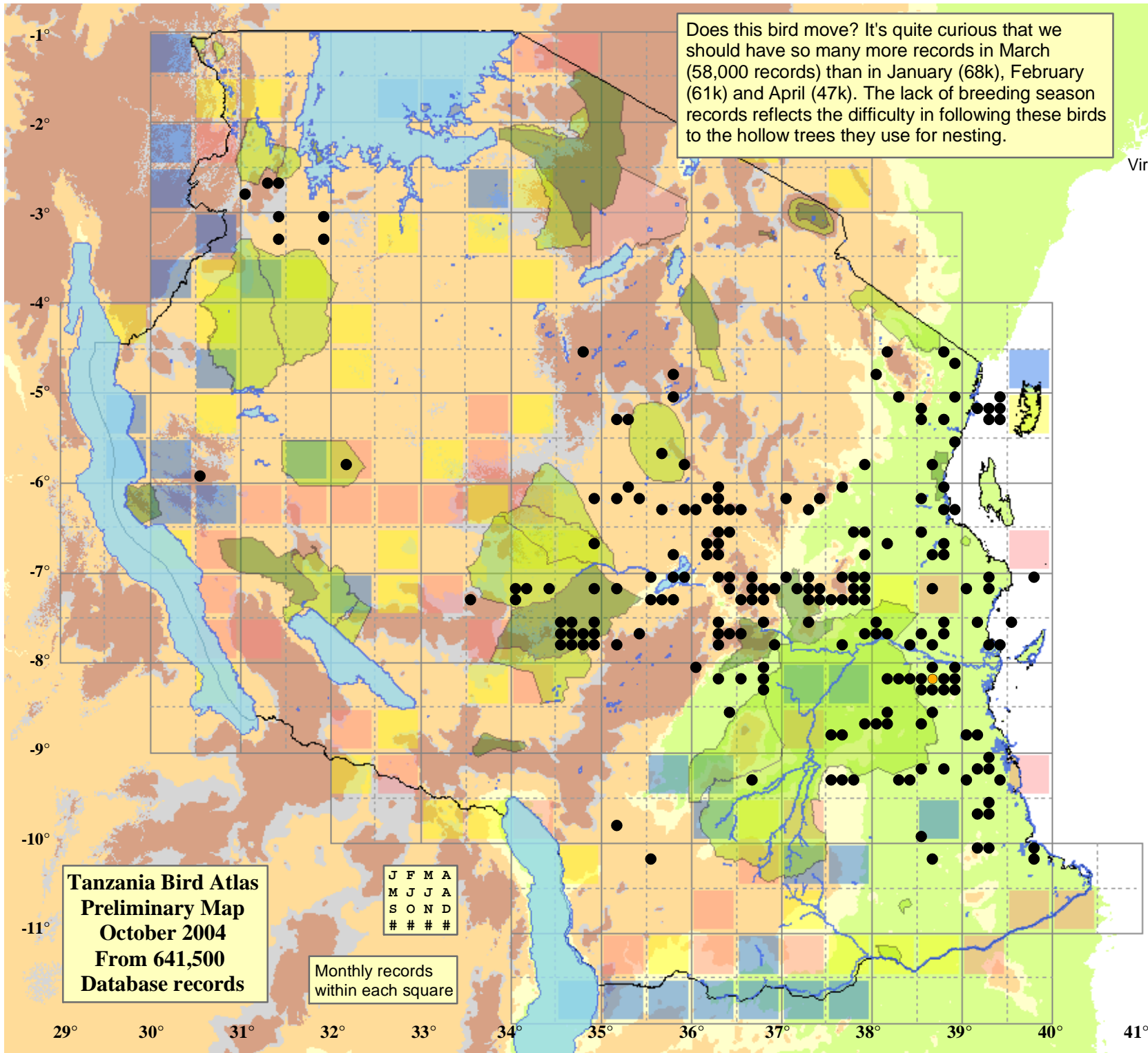
- 1 - 500
- 500 - 700
- 700 - 1,300
- 1,300 - 1,400
- 1,400 - 1,600

Does this bird move? It's quite curious that we should have so many more records in March (58,000 records) than in January (68k), February (61k) and April (47k). The lack of breeding season records reflects the difficulty in following these birds to the hollow trees they use for nesting.

Tanzania Bird Atlas  
Preliminary Map  
October 2004  
From 641,500  
Database records

|   |   |   |   |
|---|---|---|---|
| J | F | M | A |
| M | J | J | A |
| S | O | N | D |
| # | # | # | # |

Monthly records  
within each square



29° 30° 31° 32° 33° 34° 35° 36° 37° 38° 39° 40° 41°

-1°  
-2°  
-3°  
-4°  
-5°  
-6°  
-7°  
-8°  
-9°  
-10°  
-11°