

# Woodland Kingfisher

*Halcyon senegalensis*

628 plots from 1,610 records

Virgin Yellow-vented Bulbul squares **12**

Single YvB month **21**

Two YvB months **24**

Seasonality

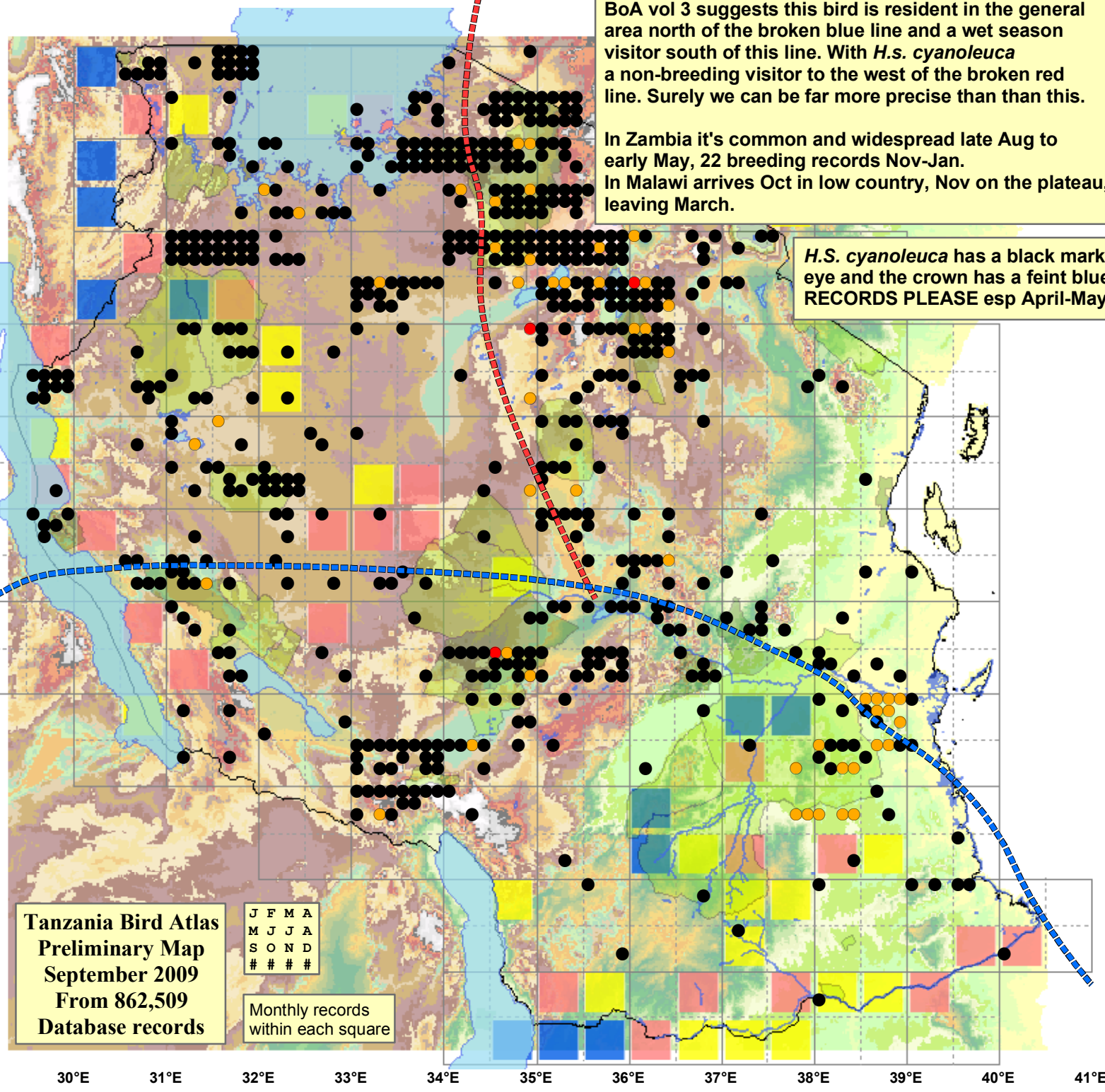
Month	presence	bs	eggs
January	253	15	2
February	201	11	-
March	183	8	-
April	138	4	1
May	100	2	-
June	103	2	-
July	99	1	-
August	69	-	-
September	58	1	-
October	61	-	-
November	110	7	-
December	160	20	-
month 13	1	-	-

BoA vol 3 suggests this bird is resident in the general area north of the broken blue line and a wet season visitor south of this line. With *H.s. cyanoleuca* a non-breeding visitor to the west of the broken red line. Surely we can be far more precise than this.

In Zambia it's common and widespread late Aug to early May, 22 breeding records Nov-Jan.

In Malawi arrives Oct in low country, Nov on the plateau, leaving March.

*H.S. cyanoleuca* has a black mark behind the eye and the crown has a faint blue wash. **ALL RECORDS PLEASE** esp April-May and Nov.



**Status**

- Presence
- Breeding season
- Month with eggs

**30m SRTM**

- 0 - 100
- 100 - 200
- 200 - 300
- 300 - 400
- 400 - 450
- 450 - 500
- 500 - 550
- 550 - 600
- 600 - 650
- 650 - 700
- 700 - 750
- 750 - 800
- 800 - 850
- 850 - 900
- 900 - 950
- 950 - 1,000
- 1,000 - 1,050
- 1,050 - 1,100
- 1,100 - 1,200
- 1,200 - 1,300
- 1,300 - 1,400
- 1,400 - 1,500
- 1,500 - 1,600
- 1,600 - 1,700
- 1,700 - 1,800
- 1,800 - 1,900
- 1,900 - 2,000
- 2,000 - 2,100
- 2,100 - 2,200
- 2,200 - 2,300
- 2,300 - 2,400
- 2,400 - 2,500

Tanzania Bird Atlas  
 Preliminary Map  
 September 2009  
 From 862,509  
 Database records

J F M A  
 M J J A  
 S O N D  
 # # # #

Monthly records  
 within each square