

Pallid Honeyguide

Indicator meliphilus

51 plots from 88 records

Virgin Yellow-vented Bulbul squares **33**

Single YvB month **32**

Two YvB months **30**

Seasonality
presence bs eggs

Month	presence	bs	eggs
January	6	-	-
February	8	-	-
March	5	-	-
April	4	-	-
May	4	-	-
June	6	-	-
July	10	-	-
August	7	-	-
September	14	-	-
October	8	-	-
November	7	-	-
December	9	-	-

Status

- ! Presence
- (Breeding season
- (Month with eggs

Elevation (m)

- 1 - 300
- 300 - 500
- 500 - 700
- 700 - 900
- 900 - 1,100
- 1,100 - 1,300
- 1,300 - 1,500
- 1,500 - 1,700
- 1,700 - 1,900
- >1,900

A scarce, presumed resident, of coastal forests and at the lower forest edge on Kilimanjaro, Meru, the Crater Highlands and, but only 2 records, the middle Eastern Arc.

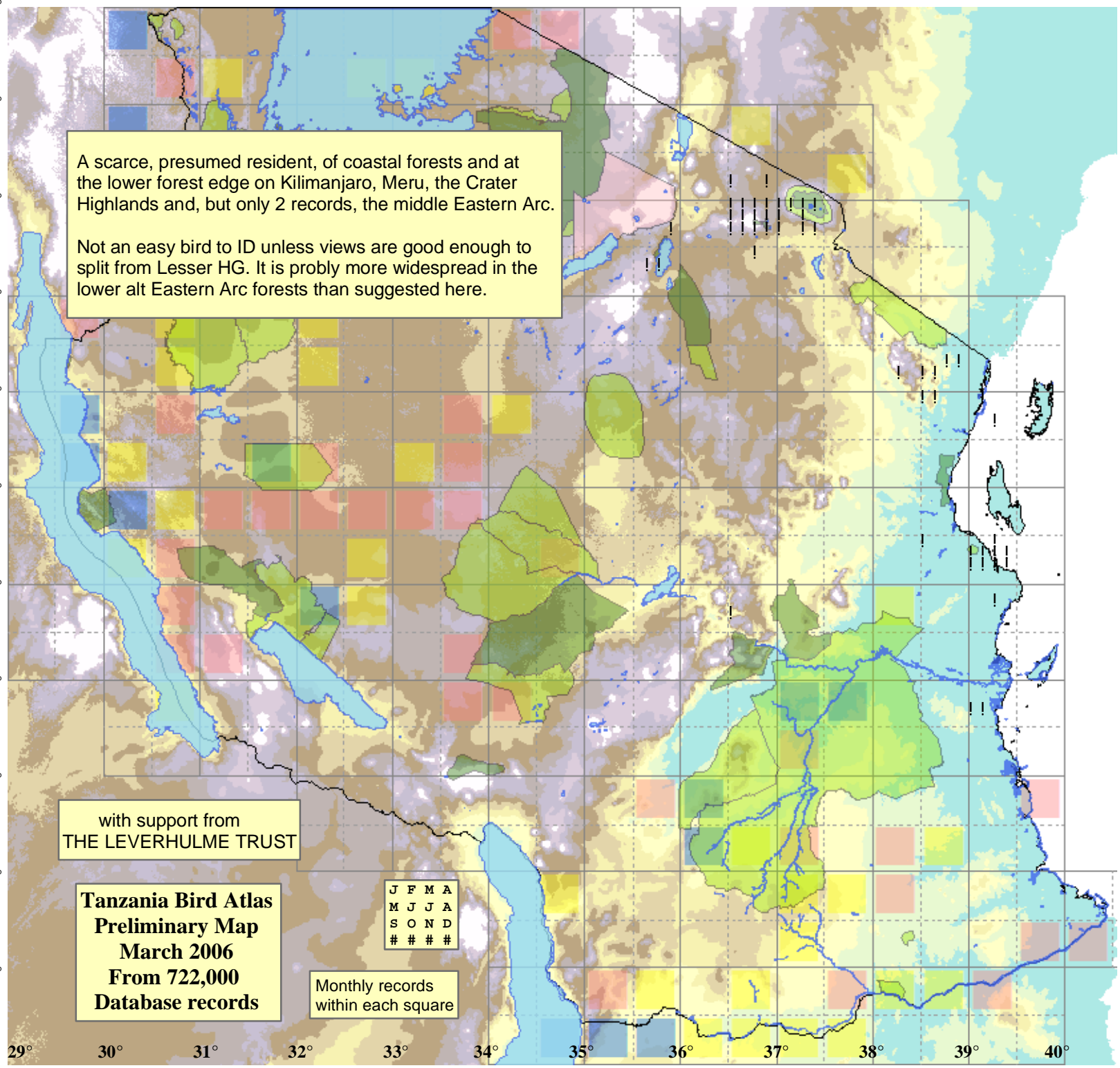
Not an easy bird to ID unless views are good enough to split from Lesser HG. It is probably more widespread in the lower alt Eastern Arc forests than suggested here.

with support from
THE LEVERHULME TRUST

**Tanzania Bird Atlas
Preliminary Map
March 2006
From 722,000
Database records**

J F M A
M J J A
S O N D
#

Monthly records
within each square



29° 30° 31° 32° 33° 34° 35° 36° 37° 38° 39° 40° 41°