

White-breasted Cuckoo Shrike

Coracina pectoralis

354 plots from 537 records

Endemic to Miombo woodland but wanderers are known to the north of the core range. It may well be more common in the NE Miombo than suggested by these few records.

Note only 2 squares with records for every month and the paucity of breeding records. Still much to learn.

Virgin Yellow-vented Bulbul squares **12**

Single YvB month **21**

Two YvB months **24**

Seasonality
presence bs eggs

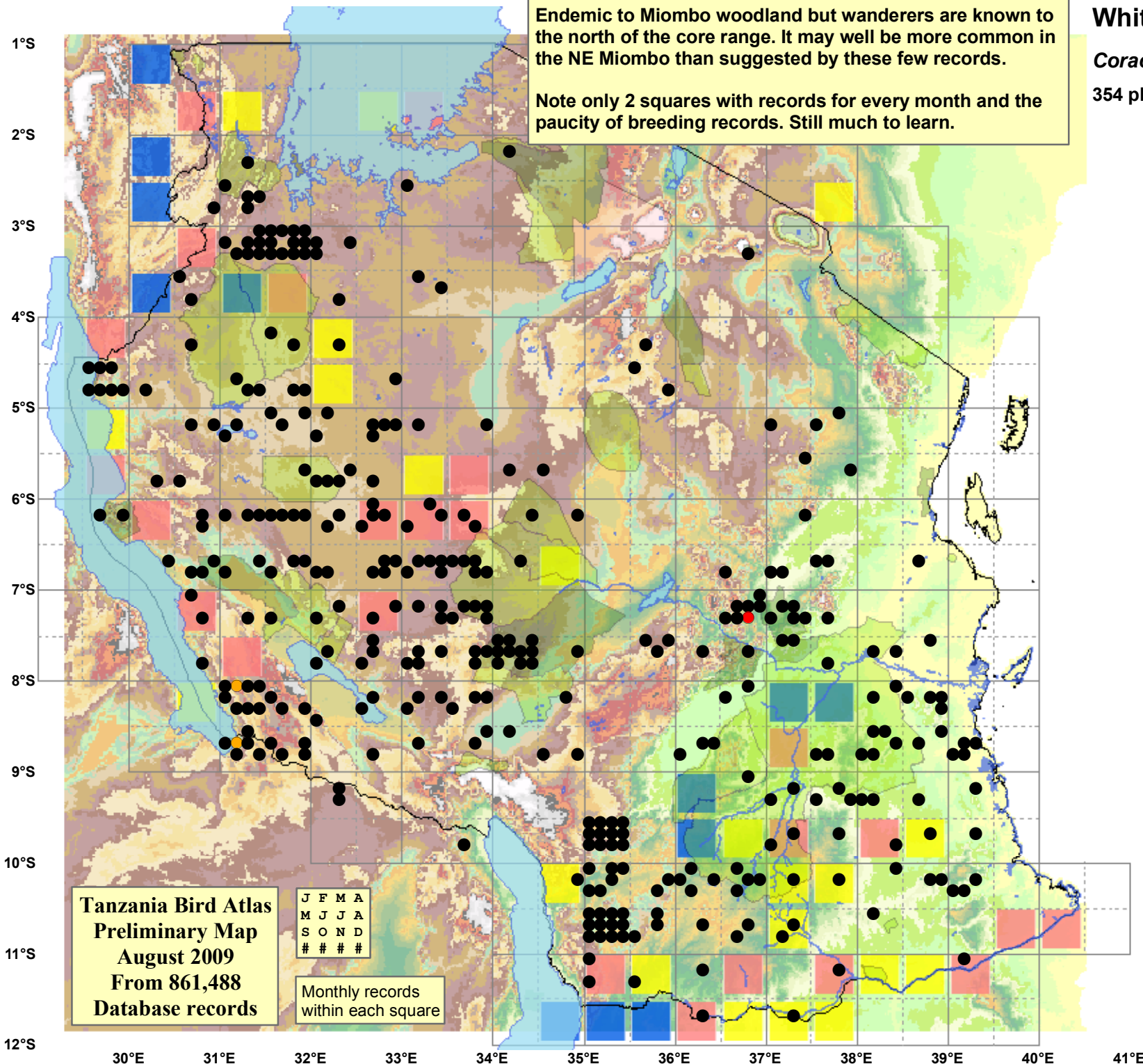
Month	presence	bs	eggs
January	23	-	-
February	27	1	-
March	26	-	-
April	27	-	-
May	32	-	-
June	42	1	-
July	85	-	-
August	85	-	-
September	55	-	-
October	50	-	-
November	47	-	1
December	34	-	-
month 13	1	-	-

Status

- Presence
- Breeding season
- Month with eggs

30m SRTM

- 0 - 100
- 100 - 200
- 200 - 300
- 300 - 400
- 400 - 450
- 450 - 500
- 500 - 550
- 550 - 600
- 600 - 650
- 650 - 700
- 700 - 750
- 750 - 800
- 800 - 850
- 850 - 900
- 900 - 950
- 950 - 1,000
- 1,000 - 1,050
- 1,050 - 1,100
- 1,100 - 1,200
- 1,200 - 1,300
- 1,300 - 1,400
- 1,400 - 1,500
- 1,500 - 1,600
- 1,600 - 1,700
- 1,700 - 1,800
- 1,800 - 1,900
- 1,900 - 2,000
- 2,000 - 2,100
- 2,100 - 2,200
- 2,200 - 2,300
- 2,300 - 2,400
- 2,400 - 2,500



Tanzania Bird Atlas
Preliminary Map
August 2009
From 861,488
Database records

J	F	M	A
M	J	J	A
S	O	N	D
#	#	#	#

Monthly records
within each square