

# Sprosser

*Luscinia luscinia*

173 plots from 609 records

Virgin Yellow-vented Bulbul squares **12**

Single YvB month **25**

Two YvB months **25**

Seasonality  
presence bs eggs

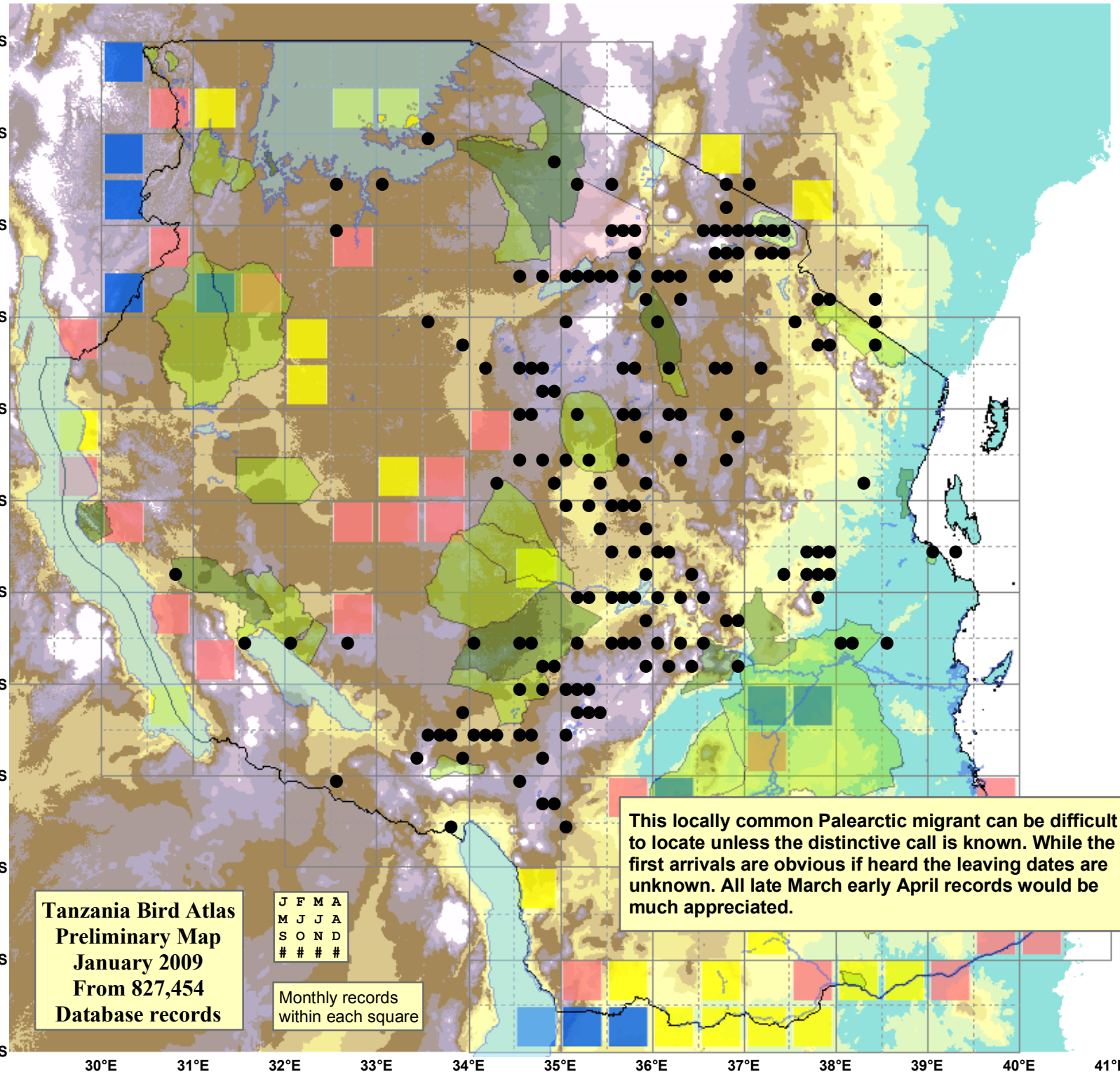
Month	presence	bs	eggs
January	125	-	-
February	107	-	-
March	164	-	-
April	20	-	-
May	-	-	-
June	-	-	-
July	-	-	-
August	-	-	-
September	-	-	-
October	18	-	-
November	72	-	-
December	103	-	-

## Status

- Presence
- Breeding season
- Month with eggs

## Elevation (m)

- 1 - 300
- 300 - 500
- 500 - 700
- 700 - 900
- 900 - 1,100
- 1,100 - 1,300
- 1,300 - 1,500
- 1,500 - 1,700
- 1,700 - 1,900
- >1,900



This locally common Palearctic migrant can be difficult to locate unless the distinctive call is known. While the first arrivals are obvious if heard the leaving dates are unknown. All late March early April records would be much appreciated.

Tanzania Bird Atlas  
Preliminary Map  
January 2009  
From 827,454  
Database records

J F M A  
M J J A  
S O N D  
# # # #

Monthly records  
within each square