

# Capped Wheatear

*Oenanthe pileata*

440 plots from 1,679 records

The 10 breeding records in the southern half of the country match the 26 from Zambia in their July-Sept seasonality. It is more complicated in the north and we need far more day dated records to better understand the movements of this species.

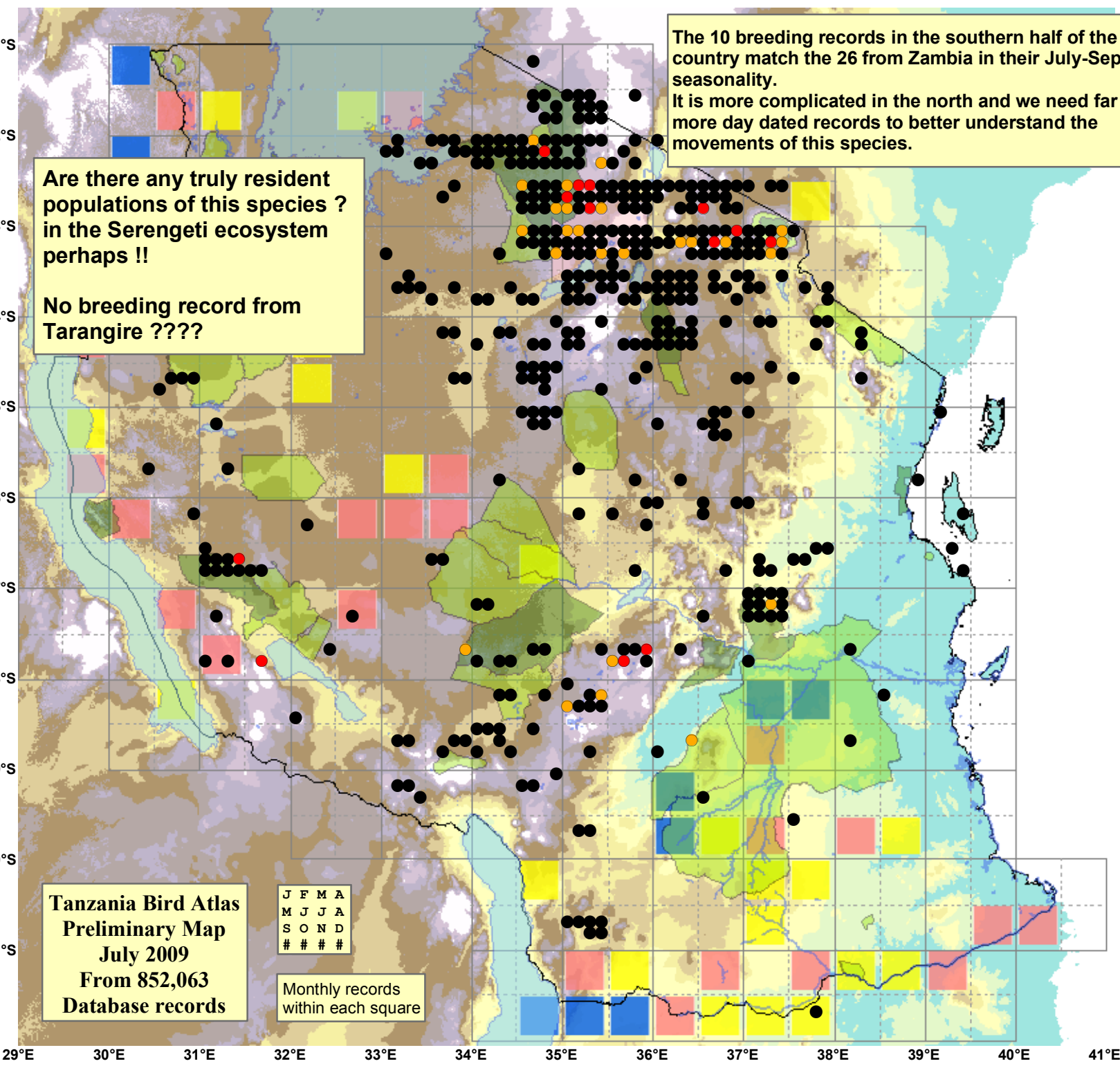
Are there any truly resident populations of this species? in the Serengeti ecosystem perhaps !!  
No breeding record from Tarangire ????

Virgin Yellow-vented Bulbul squares **12**  
Single YvB month **21**  
Two YvB months **24**

Seasonality			
	presence	bs	eggs
January	157	6	-
February	166	4	1
March	118	3	1
April	108	2	1
May	172	-	1
June	213	-	1
July	142	3	2
August	95	6	2
September	89	3	1
October	113	1	3
November	88	1	1
December	167	6	-
month 13	2		

- Status**
- Presence
  - Breeding season
  - Month with eggs

- Elevation (m)**
- 1 - 300
  - 300 - 500
  - 500 - 700
  - 700 - 900
  - 900 - 1,100
  - 1,100 - 1,300
  - 1,300 - 1,500
  - 1,500 - 1,700
  - 1,700 - 1,900
  - >1,900



Tanzania Bird Atlas  
Preliminary Map  
July 2009  
From 852,063  
Database records

J F M A  
M J J A  
S O N D  
# # # #

Monthly records  
within each square