

African Marsh Harrier

Circus ranivorus

552 plots from 1,297 records

The status of this raptor reflects the health of a certain type of wetland. Those larger undisturbed well vegetated swamps where it breeds are important for so many other birds and the wider ecosystem communities. The paucity of breeding season data is one hopes just because access to the inner habitat is often so difficult.

Virgin Yellow-vented Bulbul squares **12**

Single YvB month **21**

Two YvB months **24**

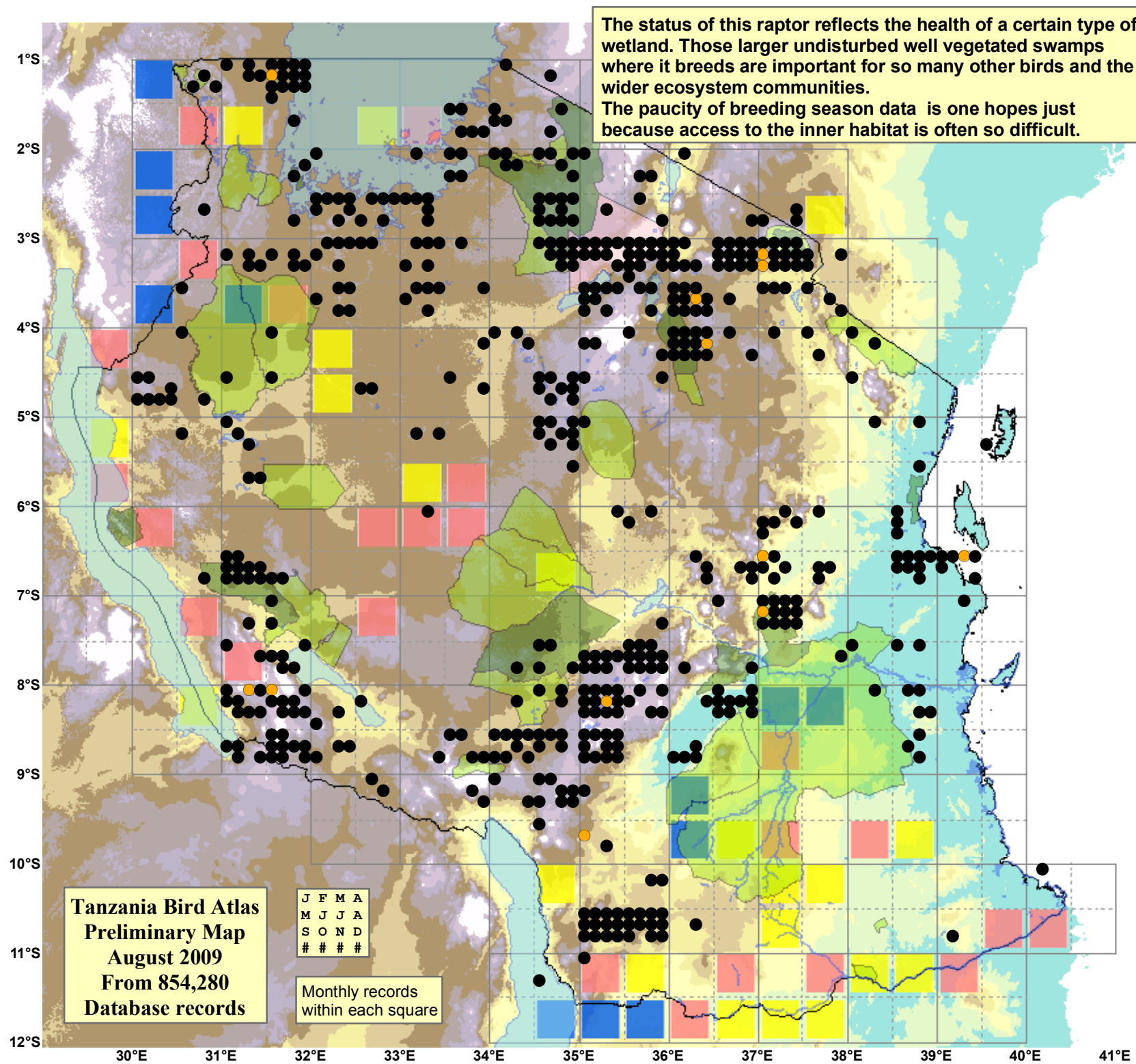
Seasonality	presence		bs	eggs
	presence	bs		
January	174	2	-	-
February	129	-	-	-
March	104	2	-	-
April	72	-	-	-
May	81	5	-	-
June	75	-	-	-
July	120	3	-	-
August	113	1	-	-
September	100	2	-	-
October	86	-	-	-
November	105	-	-	-
December	119	-	-	-
month 13	4	-	-	-

Status

- Presence
- Breeding season
- Month with eggs

Elevation (m)

- 1 - 300
- 300 - 500
- 500 - 700
- 700 - 900
- 900 - 1,100
- 1,100 - 1,300
- 1,300 - 1,500
- 1,500 - 1,700
- 1,700 - 1,900
- >1,900



Tanzania Bird Atlas
Preliminary Map
August 2009
From 854,280
Database records

J	F	M	A
M	J	J	A
S	O	N	D
#	#	#	#

Monthly records
within each square