

Collared Palm Thrush

Cichladasa arquata

280 plots from 477 records

Virgin Yellow-vented Bulbul squares **15**

Single YvB month **32**

Two YvB months **34**

Seasonality	presence bs eggs		
	presence	bs	eggs
January	53	2	-
February	29	2	1
March	30	3	-
April	20	2	-
May	22	2	1
June	31	4	-
July	44	-	-
August	39	-	-
September	43	-	-
October	57	3	-
November	37	1	-
December	47	3	-
month 13	1		

Species

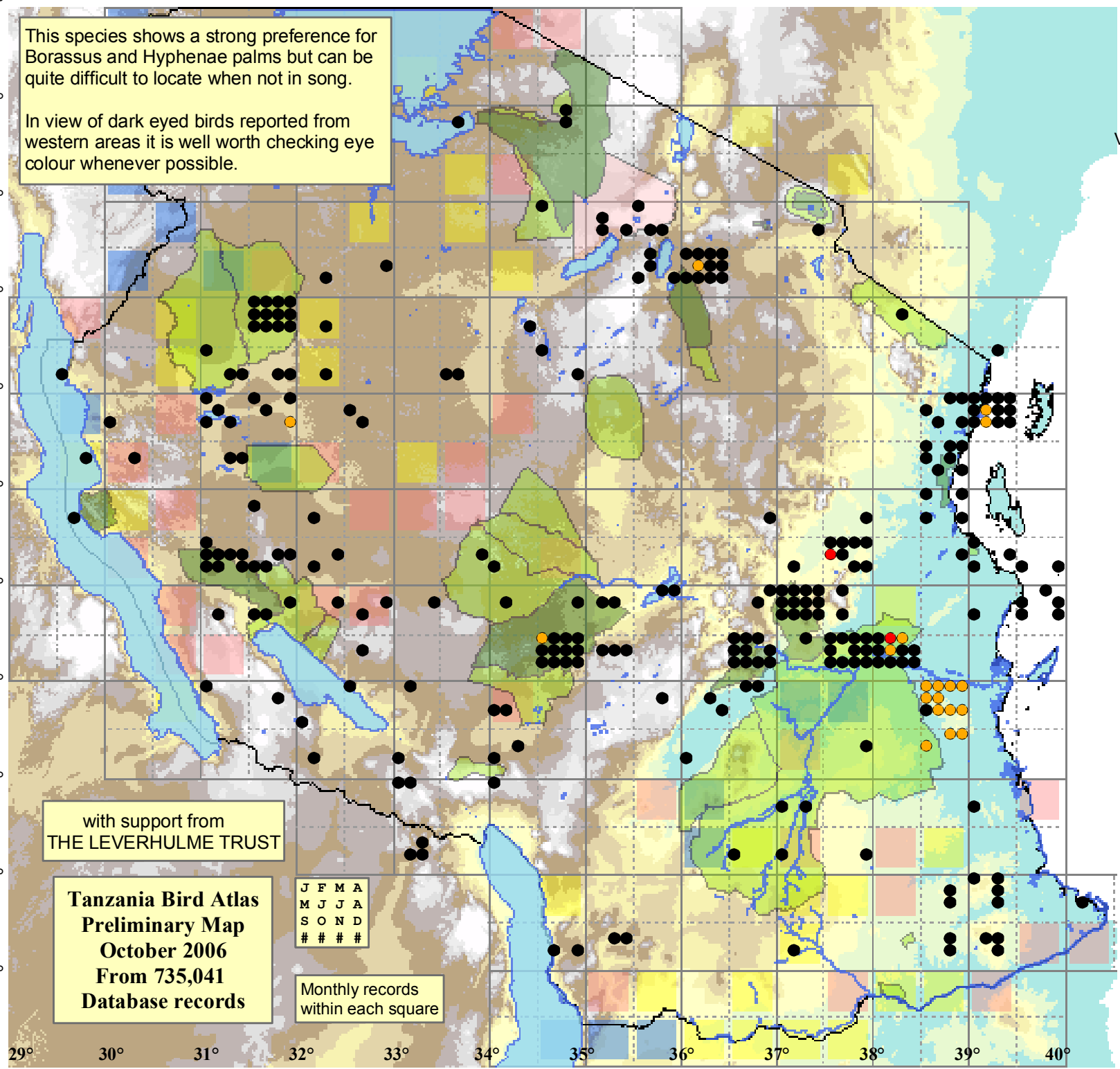
- Presence
- Breeding season
- Month with eggs

Elevation (m)

- 1 - 300
- 300 - 500
- 500 - 700
- 700 - 900
- 900 - 1,100
- 1,100 - 1,300
- 1,300 - 1,500
- 1,500 - 1,700
- 1,700 - 1,900
- 1,900 - 2,100

This species shows a strong preference for Borassus and Hyphenae palms but can be quite difficult to locate when not in song.

In view of dark eyed birds reported from western areas it is well worth checking eye colour whenever possible.



with support from
THE LEVERHULME TRUST

Tanzania Bird Atlas
Preliminary Map
October 2006
From 735,041
Database records

J	F	M	A
M	J	J	A
S	O	N	D
#	#	#	#

Monthly records
within each square

29° 30° 31° 32° 33° 34° 35° 36° 37° 38° 39° 40°

-1°
-2°
-3°
-4°
-5°
-6°
-7°
-8°
-9°
-10°
-11°