

White-headed Black Chat

Myrmecocichla arnoti

409 plots from 724 records

Virgin Yellow-vented Bulbul squares **12**

Single YvB month **25**

Two YvB months **25**

Seasonality
presence bs eggs

Month	presence	bs	eggs
January	44	4	-
February	27	2	-
March	47	-	-
April	32	-	-
May	39	4	-
June	54	-	-
July	106	2	-
August	77	1	-
September	72	1	1
October	72	2	2
November	67	5	4
December	42	5	-
month 13	11		

Status

- Presence
- Breeding season
- Month with eggs

Elevation (m)

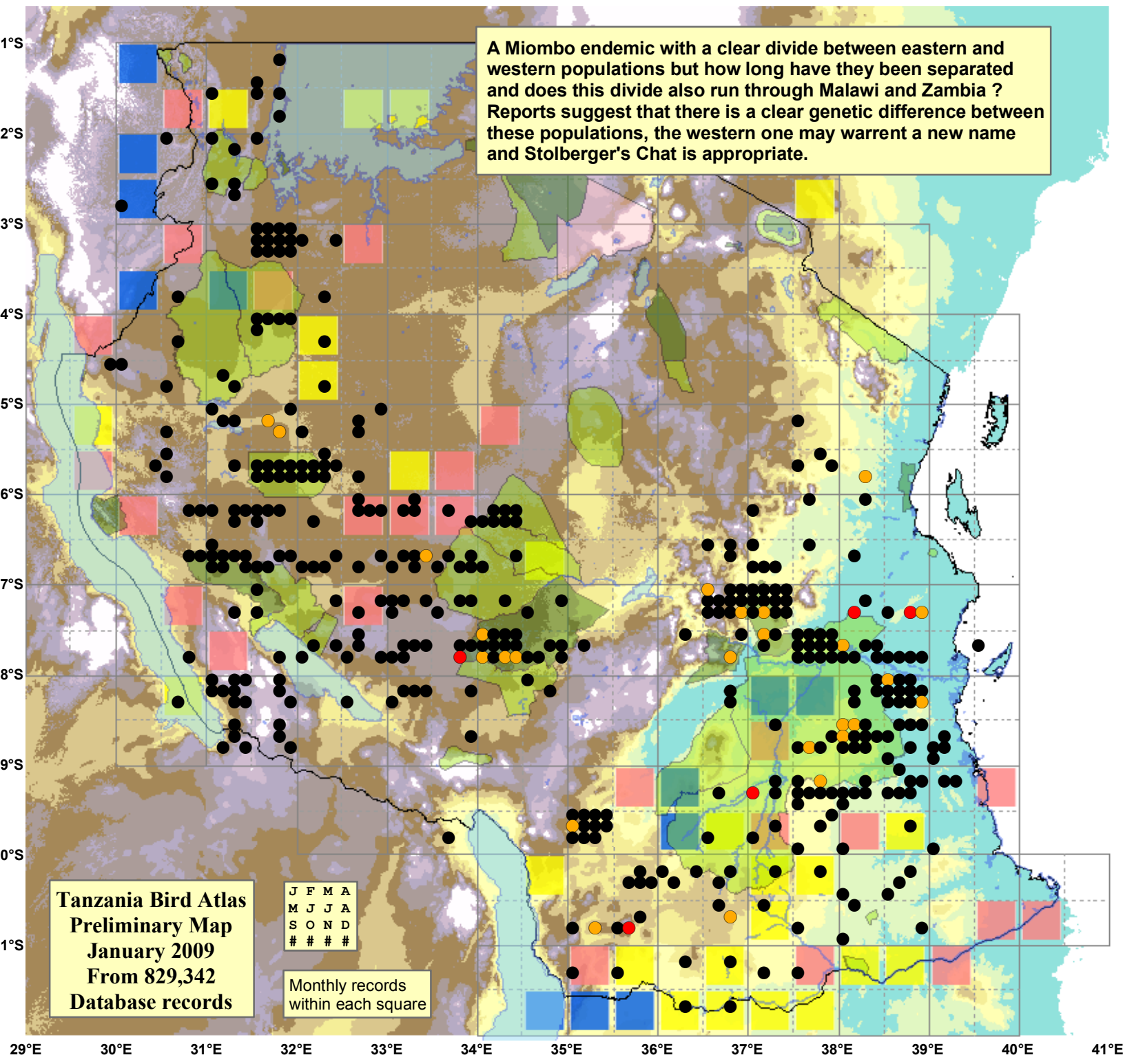
- 1 - 300
- 300 - 500
- 500 - 700
- 700 - 900
- 900 - 1,100
- 1,100 - 1,300
- 1,300 - 1,500
- 1,500 - 1,700
- 1,700 - 1,900
- >1,900

A Miombo endemic with a clear divide between eastern and western populations but how long have they been separated and does this divide also run through Malawi and Zambia? Reports suggest that there is a clear genetic difference between these populations, the western one may warrant a new name and Stolberger's Chat is appropriate.

Tanzania Bird Atlas
Preliminary Map
January 2009
From 829,342
Database records

J F M A
M J J A
S O N D
#

Monthly records
within each square



29°E 30°E 31°E 32°E 33°E 34°E 35°E 36°E 37°E 38°E 39°E 40°E 41°E